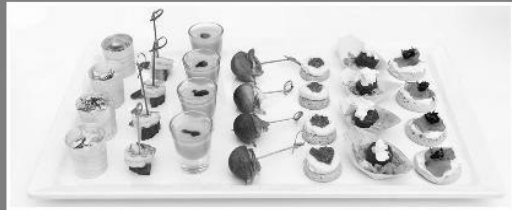


# Jeeves Catering

Specialists in Wedding, Corporate & Event Catering



We are passionate about food and use top quality seasonal produce from local suppliers wherever possible. We have an established and enviable reputation, the number of venues where we have exclusivity is testament to this.

We have long standing relationships with companies from the wedding industry – florists, photographers, wedding cake suppliers and entertainment. We are happy to supply their details.

Visit our website for menus and prices.  
[www.jeevescatering.com](http://www.jeevescatering.com)

**01778 349512**  
[info@jeevescatering.com](mailto:info@jeevescatering.com)

Jeeves Catering  
41 High Street, Maxey  
Peterborough, PE6 9EE  
Tishome catering

# Manor Farm Storage

Tel: 07736 958755

[info@manorfarmstorage.com](mailto:info@manorfarmstorage.com) [www.manorfarmstorage.com](http://www.manorfarmstorage.com)

Family run, farm based containerised storage facility within easy access of both Stamford and Bourne.

We offer you storage solutions in brand new 20ft containers all of which have been treated with a Grafo-Therm coating for condensation control.

All containers are fully ventilated.

The site has 24hr CCTV with the owner living on the premises.

For more information contact Sue on 07736958755

St Faith's



WILSTHORPE

St Andrew's



WEST DEEPING

St Michael & All Angels



UFFINGTON

St Lawrence's



TALLINGTON

St Thomas'



GREATFORD

St Martin's



BARHOLM

St Margaret's



BRACEBOROUGH

# Towers & Spires

NEWS AND EVENTS FROM  
OUR VILLAGES

AUGUST 2017

## BRACEBOROUGH HALL RETIREMENT HOME

An elegant, Victorian residence set in 1.5 acres of beautiful grounds that provides comfort, care and security whilst encouraging residents to pursue their own lifestyles.

24 hour care provided in a calm friendly atmosphere for long term, respite and convalescent residents.

Single en suite, single and companion rooms.

Fees fully inclusive of hairdressing, chiropody, outings and social activities.

**For brochure or informal visit please contact Sue Burcham RGN  
Tel: (01778) 560649 or 560831**

### Body Bliss Massage Therapy



Hot Stone Massage, Swedish Massage, Facial Massage,  
Indian Head Massage, Sports Massages (not injury)  
or Tailored Massages for your requirements.

30 or 60 minutes sessions

I am comfortable treating Men and Women

For an appointment call Lisa on 07746398965

#### CLERGY

**Rector: Carolyn Kennedy**

Tel: 01780 481786

E-mail: rector@uffingtongroup.org.uk

#### EDITORIAL SECRETARY

**Mrs Gail Genever,**

Uffington Tel: 01780 765005

gailgenever@btinternet.com

#### PREPARATION FOR PRINTING

**Pete Hickman**

Tel: 01780 754417

Please e-mail your copy (in MS Word please)  
to towersandspires@hotmail.co.uk

**PLEASE NOTE THAT ALL COPY MUST REACH GAIL & PETE BY THE 16<sup>TH</sup> OF THE MONTH TO BE INCLUDED IN NEXT MONTH'S ISSUE**

#### ADVERTISING

If you want to advertise in this magazine or have any enquiries about our advertising or leaflet delivery service, contact Pete Hickman on 01780 754417

#### VILLAGE REPRESENTATIVES

Barholm with Stow - Mrs C Baldwin.

Tel: 01778 560586

Braceborough - Mrs F Grindey,

Tel: 01778 560570

Greatford - Mrs B Everitt,

Tel: 01778 560473

Tallington - Mrs L Pollock

Tel 01780 740445

Uffington - Mrs Gail Genever,

Tel: 01780 765005

gailgenever@btinternet.com

West Deeping - Jean Stowe

Tel: 01778 346779

jean@stowe.vispa.com or

jean.stowe@abelgratis.com

Wilsthorpe - Mrs V Stuart,

Brook House, Wilsthorpe



## Paul Green

**Painting, Decorating - Interiors and Exteriors**

Fully Qualified, 30 years' experience

Two year Dulux backed guarantee

For a **FREE** Estimate

**Tel: 01778 344478**

**Mobile: 07974 939120**



## HANDYMAN AVAILABLE

Employed p/t as a handyman for a national children's charity, I'm looking for extra work. A brick/stone-layer by trade, I've spent the last 9yrs in maintenance in the charity sector. DBS checked. Fully insured. References available on request.

**For free estimates and advice,  
please ring Dave on 07592 608173**

**Quality / Picture Framing**

Original Artwork  
Prints  
Photographs  
Objects  
Needlework  
Hand Finishing

Call Anthea in Thurlby on  
01778 423681 / 07976 267040

- Specialising in all types of Fencing
- Gates made to measure
- Decking & Pergolas
- Sheds & Garden Storage
- Free no obligation quote
- For all your Fencing needs

"TOP QUALITY, TOP SERVICE, TOP JOB!"

Tel: 01778 700 363

Web: [www.topcattfencing.co.uk](http://www.topcattfencing.co.uk)

Email: [enquiries@topcattfencing.co.uk](mailto:enquiries@topcattfencing.co.uk) | Mob: 07545 220 923

Need help with your chores?

- ❖ CLEANING
- ❖ DUSTING
- ❖ HOOVERING
- ❖ IRONING

Weekly - fortnightly or one off spring cleans.

References available



Diane Smith Cleaning Services

11 Hereward Way  
Deeping St. James • PE6 8QA  
T: 01778 344478 • M: 07734 319738  
E: [deapings\\_girl@live.co.uk](mailto:deapings_girl@live.co.uk)

#### PAINTER

AND

#### DECORATOR

BASED IN LANGTOFT

NO JOB TOO SMALL

PLEASE CALL ALLISON TO DISCUSS YOUR REQUIREMENTS

Tel: 07870997248



## LOGS FOR SALE

Hardwood & Softwood  
All dry seasoned  
6-8inch (Small) & 10-12inch (Large)

Cubic Metre Hardwood - £80

Cubic Yard Softwood - £60

Tipped to nearest point

**Call: Mobile 07802 379337 or  
Home: 01778 394183**

## ***We will remember them .....***

In August, we will mark the centenary of the death on active service of two men honoured on the First World War memorials in our parishes:

**Lance Corporal Charles Cyril Staplee** of the 1<sup>st</sup> Battalion Royal Fusiliers died on 31<sup>st</sup> July 1917. Charles Staplee had been born in Barholm in 1884, the son of Henry and Elizabeth Staplee. Henry (who had been born in Tallington) was a farmer and in 1901 the family was living in Main Street, Barholm. Henry died in 1905 (aged 77), and by 1911, Elizabeth, with Charles and one of his sisters are living at *Barholme Manor*, with Elizabeth being described as the farmer. Charles enlisted in the Royal Fusiliers in London in November 1914, and served in the 1<sup>st</sup> Battalion, which had arrived in France to relieve the hard pressed British Expeditionary Force before moving north to Flanders. The Battalion saw action in Flanders during 1915 and early 1916, before moving south to take part in the later stages of the Battle of the Somme. It then moved north again and saw action around Ypres. On 31 July 1917 it took part in the Battle of Picklem Bridge – the start of the third Battle of Ypres (later referred to as the Passchendaele campaign). Charles and 77 other men of his Battalion died on 31 July - 67 of them, including Charles having no known grave (but being commemorated on the Menin Gate). Charles Staplee was 33 years old when he died, and as a son of Barholm he is named on the war memorial in St Martin's Church, Barholm. He will be commemorated during Evening Prayer on 6<sup>th</sup> August.

**Private Thomas Amos Lyon** of the 6<sup>th</sup> Battalion Lincolnshire Regiment died on 16<sup>th</sup> August 1917. Thomas Amos Lyon had been born in Wisbech in late 1881, but after becoming a farm worker lived in various places in South Lincolnshire, particularly Castle Bytham (where he married Edith Lound in 1902), Tinwell, Northborough, Ryhall, & Deeping St James and probably Uffington. Thomas Amos Lyon enlisted in the army in Stamford in 1915 and served in the 6th Battalion of the Lincolnshire Regiment. The Battalion took part in the Gallipoli campaign in August 1915 and within a month over 200 men were killed in action (and a greater number injured). Thomas was posted to the Battalion in October 1915, and so took part in the later stages of the Gallipoli campaign, the withdrawal in early 1916 to Egypt and subsequent posting to France and involvement in the latter phases of the Battle of the Somme. In 1917 the Battalion were engaged in further actions near the Somme before moving to Ypres, and on 16 August took part in the Battle of Langemark (the second major offensive of the Passchendaele campaign) and Thomas and a number of his companions were killed in action (but have no known grave). Thomas was 35 years old when he died, and is named on the war memorial in St Michael and All Angels' Church, Uffington, where he will be commemorated during the Morning Service on 13<sup>th</sup> August.

*From the Honorary Priest*

*Dear Friends*

As Carolyn wrote in last month's magazine, the Pensions Board is busy searching for a retirement property for her. Although the date of her departure remains uncertain, it appears that the Pensions Board is making good progress, so the formal start of the vacancy process outlined by the Archdeacon in July may not be long delayed. The work of the church will of course continue – largely as in the last few months, though there will be some changes: Nikki Mann is on the point of moving to a Group of Parishes near Newmarket, and we certainly wish her well as she inducted as Priest-in-Charge of the Raddesley Group on 5<sup>th</sup> September, and express our appreciation for her ministry in our villages during the last few months. We can look forward to the continued assistance of Aran Beesley, Mark Warrick, Clive Hilton and David McCormack working alongside our ministry team in the next few months and are likely to see more of the Revd Lis Ward (of St George's Stamford).

The process of finding the person called by God to be the new Rector should naturally be surrounded by prayer. Led by Susanna Aldred, a number of folk in our parishes have started meeting for about half an hour a fortnight to pray for love and unity within the Group of Parishes as the vacancy approaches and that the right successor to Carolyn may be found. Further gatherings will take place on Tuesday 8<sup>th</sup> August at 10am in Uffington Church, Wednesday 23<sup>rd</sup> August at 7:30pm in Tallington Church, and anyone is welcome to come (and there is no obligation on everyone attending to pray publicly!) The intention is to rotate the gatherings around the seven parishes and vary day and time to give those with regular commitments opportunity to attend sometimes – do feel free to come along whenever you can.

And whether or not you can attend, do join with others in the Group who in personal prayer are, among other things:

- giving thanks for the ministry of Carolyn over the last seventeen years, and praying for her as she prepares to move and settle into her retirement bungalow and seek to discover God's plan for her retirement ministry;
- praying for the continuing work of the church in the Group, for visiting ministers, our ministry team, the churchwardens, and PCCs of the parishes, and all the people who do so much to look after our seven churches;
- praying for those responsible for the various steps of the vacancy process;
- praying that the appropriate person will hear God's call to the Uffington Group of Parishes.

Whether you pray privately or with others, may we all unite in asking God to guide and bless our Group of Churches at this time.

*Yours in Christ*

*Martin*

## READINGS FOR AUGUST

	Psalm	OT	NT	Gospel
6 <sup>th</sup> August Transfiguration of Our Lord	Psalm 97	Daniel 7:9-10 & 13-14	2 Peter 1:16-19	Luke 9:28-36
13 <sup>th</sup> August Trinity 9 (Proper 14)	Psalm 85:8-13	1Kings 19:9-18	Romans 10:5-15	Matthew 14:22-33
20 <sup>th</sup> August Trinity 10 (Proper 15)	Psalm 67	Isaiah 56:1, 6-8	Romans 11: 1-2a, 29-32	Matthew 15:[10-20], 21-28
27 <sup>th</sup> August Trinity 11 (Proper 16)	Psalm 138	Isaiah 51:1-6	Romans 12:1-8	Matthew 16:13-20
3 <sup>rd</sup> September Trinity 12 (Proper 17)	Psalm 26:1-8	Jeremiah 15:15-21	Romans 12:9-end	Matthew 16:21-end

The readings at Holy Communion are normally the NT and Gospel, and at Morning and Evening Prayer are usually Psalm, OT and NT (but do check with the preacher).

The liturgical colour on 6<sup>th</sup> August is white for the Feast of the Transfiguration, and then for the rest of the month is green for the "ordinary time" of the Sundays after Trinity.

### FROM THE REGISTERS

#### Baptisms

16 July Uffington

Florence and Cecily Mitchell

# RICHARD OAKLEY DESIGN

**asks the leading question for 2017!**

**Are you tired of your Lounge, Kitchen, Bathrooms or even your COMPLETE house?**

**We are Chartered Surveyors and offer a complete REDESIGN & BUILD SERVICE with a fresh approach to your problems, via Drawings, Planning, Building Regulations, & Structural appraisals. Estimates of costs to Quotations to Project Management and successful completions.**

**In 2015 & 2016 we have designed and completed 3 new houses, a successful conversion of a Health Centre to a modern styled house, Extensions, Conservatories and Orangeries. Design and Planning work on Grade 11 Listed Buildings, modern houses and bungalows, designed and fitted 8 Kitchens with work in Stamford, Barnack, Ufford, Morton, Rippingale, Dyke, Bourne, South Witham, Kings Cliffe and smaller projects in various other locations.**

## WHY NOT LET US HELP YOU

We will give you an hours **FREE** consultation to explore your ideas and needs

Call Richard on 07711060930 or Email: [richard.oakley.charyor@gmail.com](mailto:richard.oakley.charyor@gmail.com)

**We are professionally qualified, fully insured and have 40+ years' experience**

**As chartered surveyors and successful property developers and project managers**

**RING US AND TOGETHER LET US SEE WHAT CAN BE ACHIEVED**

**Bed & Breakfast Accomodation**

30 Casewick Lane  
Uffington  
Stamford  
Lincs PE9 4SX

Phone: 01780 757392  
Mobile: 07767 125236  
denisea30@talktalk.net

Mrs D JARVIS

Luxury 4 star  
hospitality



**FENLAND  
FRAMES**

07843 913 201

**PICTURE FRAMING**

Affordable framing for: Art, Mirrors & Objects  
24 KING ST, WEST DEEPPING

[www.fenlandframes.com](http://www.fenlandframes.com)

**INCLUSIVE  
CHILDMINDER**  
(OFSTED Registered)



Full or Part-time care offered at Tallington  
*All your child care requirements  
met in a safe and friendly  
home environment.*

**Call Anita on 01780-749373**

**PIANO TUITION**

Preparation for  
ABRSM or Trinity Grades  
OR just for pleasure

Children and adults catered for

**Pamela Westgate**  
01780 740879

**Caroline Hall Arboriculture**

Condition Surveys & Risk Assessments  
Tree Work Applications & Planning  
Surveys  
Mortgage Reports  
Arboricultural contract work

[caroline@tree-surveyor.co.uk](mailto:caroline@tree-surveyor.co.uk)  
07947 653004

[www.tree-surveyor.co.uk](http://www.tree-surveyor.co.uk)

**THE RUG  
STUDIO**  
LONDON • UPPINGHAM

Sales • Cleaning • Restoration • Bespoke



BEFORE AFTER



The Rug Studio Shop: The Rug Studio, 2 High Street East, Uppingham, Rutland, LE15 9PZ  
The Rug Studio Warehouse: Sunday - Friday (By Appointment) London, N4 1TJ

Opening Hours:  
Uppingham: Tuesday - Saturday 10am - 5pm

[www.therugstudio.co.uk](http://www.therugstudio.co.uk)  
Email: [info@therugstudio.co.uk](mailto:info@therugstudio.co.uk) • Tel: 01572 829927

**MATHS TUITION**

Hazel Williams  
Experienced tutor for  
KS3/GCSE/A level

**01778 560417**

**Ben Freeman**

Your Local Supplier of  
Topsoil, Turf, Hardcore & Aggregates  
from 1 to 20 tonne.

Landscaping, Hedge Management, Driveway  
Maintenance and Contract Work undertaken.

**For a Competitive Free Quote  
contact Ben on:  
07703337128 or 01780 238376  
or 01778 345887**

**Is computing driving you  
mad?!?**

You can have Smart Phone, Tablet,  
PC, Internet, Email and Network  
problems solved in your own home  
on a no fix, no fee basis.

**No callout charge!!**

**PC Health Check - £60  
(At least 2 hours)**

**To see how I can help please call  
01780 754802**

**Robert Irvine**  
BSc(Hons), MSc, MBCS, CEng, CITP

**Love your computer again!**  
I can fix most hardware and  
software issues in your home!  
All work **GUARANTEED**



Home and business network installation and  
support  
Hardware repairs and upgrades  
Health check and service, virus removal  
Internet help  
Remote desktop support  
PC and MAC software support  
Data management and cloud storage/backup tuition

**Microsoft  
CERTIFIED**  
Desktop Support  
Technician

**\*New Service\* TV and Audio equipment set up**  
Want to watch iPlayer and itv player on your TV?  
You can!!

Give me a call on 01780 721663 or 07733323657  
email [dennis@computechnique.co.uk](mailto:dennis@computechnique.co.uk)

[www.computechnique.co.uk](http://www.computechnique.co.uk)



**4mostBLINDS**

MODERN FABRICS @ AFFORDABLE PRICES  
01778 342658 or 07711812881

HIGH QUALITY-FRIENDLY SERVICE

**Verticals from 3for£190 \***  
*OUR EVERYDAY PRICES ARE USUALLY  
BETTER THAN THE 50% OFF SALE PRICES  
OF NATIONALLY ADVERTISED COMPANIES*

**ROLLERS, VENETIANS & VERTICALS  
ROMANS, PLEATS, PERFECT FIT,  
Latest fabrics incl POLLERGEN  
Blinds for hayfever relief!!!**

Much work gained via recommendations

**FREE Quote + Fitting + Guarantee  
and NO HARD SELL - That's a  
PROMISE**

*\*Selected fabrics-Offers may change without notice  
Happy to support Towers and Spires*

# Fentons of Bourne Ltd

## LAWNMOWER

### Ride on & Pedestrian Mowers:

**Sales** Take advantage of our servicing special prices. Call for details.  
**Service** Any other work required will be charged additionally to cover  
**Repairs** parts cost and labour at £30inc VAT per hour.  
**Parts**

**Kates Bridge, Nr Thurlby, Bourne, Lincs PE10 0EN**

**Tel: 01778560466**

email: [info@fentonsofbourne.co.uk](mailto:info@fentonsofbourne.co.uk) [www.fentonsofbourne.co.uk](http://www.fentonsofbourne.co.uk)

**Stiga Lawnflite Mountfield MTD CubCadet**

## MANOR FARM PRE-SCHOOL

### In Barholm

Offers children a happy, caring and stimulating learning environment, in a lovely rural setting. Housed in converted barns on a working farm, with a Large walled garden for lots of fun. For children aged from 2yrs. See our 'OUTSTANDING' Ofsted Report! (Feb 2011) Do come and visit us!



*An Ofsted Awarded  
'Outstanding Pre-School'  
[www.manorfarmpreschool.com](http://www.manorfarmpreschool.com)*

Mrs A Flint Ad. Dip Ed  
Tel: 01778 560887



**BARRY BAKER**  
VEHICLE ACCIDENT REPAIRS  
STOWE ROAD  
GREATFORD  
STAMFORD PE9 4PS

Low Bake Spray Booth  
Body Jigging Facilities  
Computerised Wheel Alignment  
Courtesy Cars Available

Tel: 01778 560404  
Fax: 01778 560777

SPACE FOR YOUR MESSAGE  
OR ADVERT

CORN EXCHANGE SHOPPING ARCADE

Broad Street, Stamford PE9 1PX

OPENING HOURS: 9.30am-5pm

Monday – Saturday

Stamford's unique indoor shopping centre

ENJOY A CUPPA IN THE CAFE  
WHILST YOU WINDOW SHOP.  
INDEPENDENT SHOPS,  
inc; Fashion, Fabrics, Leathergoods,  
Records, Children's Wear, Antiques,  
Party Accessories.  
Come in and discover more

Follow us on Facebook and Twitter and  
learn about future events and offers

SUPPORT YOUR LOCAL SHOPS

## HOME CHOOSE CARPETS Est. 30 Yrs THE DEEPINGS CARPET CENTRE



"The Carpet Shop That Comes To You"

Your Local Carpet Takeaway - The Deepings only Carpet Stockists



QUALITY  
PROFESSIONAL  
HOME SERVICE

- Carpets
- Vinyl
- Laminate / Wood
- Karndean

No Obligation  
Quotes

Extensive & Exclusive  
Ranges

1000s of Samples

7 Days a week  
Day / Evening

We also supply  
and fit  
Vertical, Roller  
& Venetian  
Blinds

Discount for  
Full House  
All Work Fitted  
and Gauranteed



**Call Bill Woods**  
**01778 346918**  
[www.homechoose-carpets.co.uk](http://www.homechoose-carpets.co.uk)

Visit our showroom at: Unit K, Bentley Business Park, Blenheim Way  
Northfields Industrial Estate, Market Deeping (Opposite The Inside Out Store)  
Showroom open Monday to Friday 9:00 - 4:45, Saturday 9:30 - 3:30

## BRACEBOROUGH

**Holy Communion Service on Sunday 6 August at 9am St Margaret's Church.** Everyone is very welcome to join us at this service.

**Altar Frontal.** Our altar frontal has now been returned to church following specialist cleaning. Maggie has spent several hours carefully sewing loops to the top of the frontal to enable us to re-hang it on a brass rod, allowing much-improved airflow and considerably improving the presentation on the altar. A huge 'thank you' to Maggie for her time and seamstress skills and to Phil who unerringly bored into some rather fine, tough oak to enable hooks to be inserted. A tricky operation rather well executed. Thank you to both of you.

### **Future Events.**

29 September - Harvest Thanksgiving Service & Harvest Supper

14 October – Murder Mystery Play – more details to follow about this risky trip to the seaside!

2 December – A gin-tasting evening. If you want to know what's brewing, ask Sarah M!

3 December – Sunday Lunch

9 December – Rural Touring Scheme: Nine Barrow

24 December – Carol Service, followed by mulled wine & seasonal nibbles

**Fly The Flag.** The Union flag was flown on 15 July to celebrate Lyn's birthday. It costs just £5 to fly the flag to celebrate a birthday, anniversary or any other memorable or special event. Please contact James or Hazel (560417).

**Booking the Village Hall.** We have a very well equipped village hall – available for hire from just £8 per hour. Please call James or Hazel (560417) to find out if the date you are interested in is free.

## WILSTHORPE

The next Service at St Faith's is Holy Communion at 10.30am on Sunday 6<sup>th</sup> August 2017. Please do come along and join us, where you will be made most welcome.

**CORRECTION!** The Coffee Morning is Saturday 12<sup>th</sup> August – at Braceborough & Wilsthorpe Village Hall, which will include delicious homemade cakes, raffle, stalls and games for the children. All proceeds for St Faith's Church Fabric Fund.

Also any offers of help cleaning the church [just an hour or two a month] arranging flowers and/or churchyard maintenance would also be greatly appreciated. Please contact Peter, Church Warden at Wilsthorpe Cottage or Susan, Treasurer at Corner Cottage.

A range of paperback books are still available at the church, 50p each or 3 for a £1 (a bargain!). The collection is regularly refreshed.

### **WELLAND MOTHERS' UNION**

There is no meeting in August

Mary Sumner Day Service

Wednesday 9<sup>th</sup> August 10am St. Guthlac's Church, Market Deeping

Followed by coffee in the Green school with a bring and buy stall

Info. from Elizabeth 01778 344674 or Anne 01780 740151

## TALLINGTON

### Church Flowers

6<sup>th</sup>/13<sup>th</sup> August – Mrs S Taylor  
20<sup>th</sup>/27<sup>th</sup> August – Mrs V Sorrell

**200 Club Winners in June:** No 74 Mrs A Warren £50; No 126 Mr and Mrs S Chapman £25; No 29 Miss F Allen £10

**Social Evening:** The sun really shone for us for our Summer Party on Saturday 17 June. It was lovely to see so many people and the children really enjoyed the Bouncy Castle. The Pimms and beer were appreciated on the hot day and the strawberries and cream were delicious.

There is no Social in August so please put the next one in September in your diaries now. It will be the annual Harvest Supper which is always well attended and much enjoyed both for the food and the company! It will be on the usual day and time – Friday 29<sup>th</sup> September from 7.00pm.

**Mobile Library Service:** The Mobile Library Service will be in Church Lane from 11.15 to 11.45 am on Monday 7<sup>th</sup> August. Those of us who use it find it a very valuable service.

**The Post Office:** This is another important service in the Village which we are in danger of losing. It opens in the Village Hall every Tuesday afternoon from 2 to 4pm. Please make use of it if you can.

**Flying the Flag:** Why not celebrate your special occasion this way. For £5 the flag (Union Jack or St George's) flies just for you and at the same time you are helping to fund the Village Hall and Playing Field. Just ring John or Liz Allen (740076).

**Hiring of the Village Hall:** Please remember The Village Hall, complete with crockery, cooking facilities, tables and some very nice chairs – everything you need really for your party – can be hired at a competitive price. Just contact Nicole on 07919 347948 or email her at nrobo98@yahoo.co.uk

**The Parish Council:** Please remember all residents are welcome at the Parish Council meetings. The next one will be held on Tuesday 12<sup>th</sup> September 2017 at 7.30pm

## Disney Animated Movies

T	O	Y	S	T	O	R	Y	T	A	L	E	N	M
A	E	M	L	T	A	N	G	L	E	D	E	F	A
T	S	E	S	U	D	O	O	H	N	I	B	O	R
A	F	A	N	T	A	S	I	A	I	O	O	N	C
T	H	O	O	N	A	L	U	M	N	M	O	A	N
L	E	D	U	M	B	O	A	N	E	I	R	G	L
O	R	O	T	N	W	O	T	E	R	S	T	T	A
B	C	N	Z	A	N	A	P	R	E	T	E	P	L
O	U	M	L	G	T	A	R	Z	A	N	B	I	A
A	L	L	U	M	N	N	B	A	M	B	I	R	A
A	E	B	B	R	O	T	H	E	R	B	E	A	R
O	S	M	O	N	S	T	E	R	S	I	N	C	D
P	O	C	A	H	O	N	T	A	S	B	A	R	O
H	A	R	O	I	H	C	C	O	N	I	P	T	T

BROTHER BEAR  
POCAHONTAS  
TOY STORY  
CARS  
FANTASIA  
MONSTERS INC  
BOLT  
MULAN  
WALL-E  
ROBIN HOOD  
PETER PAN  
PINOCCHIO  
BAMBI  
DUMBO  
TANGLED  
HERCULES  
TARZAN

Play this puzzle online at : <http://thewordsearch.com/puzzle/26/>



# The Oil Tank Company

We install the latest, efficient and environmentally safe **PLASTIC Tanks** for **Domestic, Industrial and Commercial use.**

New Tanks Installed.

Old Tanks Removed.

Oil Transferred.

Emergency pump out service.

Single and Double skinned tanks available

Free site visits and estimates.

the

**Oil Tank** Company Ltd **Tel (01780) 782255**

# Top Cat Electrical

*HELPING TO PROTECT YOUR PROPERTY*

10 Rycroft Avenue, Deeping St James, Peterborough. PE6 8NT

Tel: **01778 349362** Mob: **07742 963925**

Email: [top\\_catl@live.co.uk](mailto:top_catl@live.co.uk)

Web: [topcatelectrical.co.uk](http://topcatelectrical.co.uk)

Serving the local community for the past 7 years.

From extra sockets, security lighting, Inspection & Testing to full re-wires.

P.A.T testing with the option of a FEMALE tester.

Links with local Builders, Plumbers and Solar Installers.

We are fully accredited with Napit, for all works including:

Domestic, Commercial, Industrial and Agricultural.



Copthill School

Independent Nursery and Day School  
FOR CHILDREN AGE 2 TO 11 YEARS



Join us on our educational adventure

[www.copthill.com](http://www.copthill.com)

For more information call: 01780 757506 email: [admissions@copthill.com](mailto:admissions@copthill.com)

COPTHILL SCHOOL, BARNACK ROAD, UFFINGTON, STAMFORD, LINCOLNSHIRE, PE9 3AD

## TRADITIONAL STONEMASONRY REPOINTING

**Restoration and  
repointing of old stone  
walls using traditional  
hydraulic lime mortar**

**Enhances and Conserves**

**New walls built using  
reclaimed stone**

**For more information phone  
07912 216772**

The printing and binding of

**FAMILY HISTORY  
BOOKS**  
a speciality

to include family photographs  
and memorabilia

Short runs – 1 book &  
upwards  
(from manuscript or disc supplied)

\*\*\*

**PETER SPIEGL & CO**  
Guash Way  
Ryhall Rd Industrial Estate  
Stamford

**Tel: 01780 762550**

# Grimsthorpe Castle

near Bourne

## BUY YOUR SEASON TICKET NOW!

3,000 acres of parkland, cycle hire and trails, adventure playground, large gardens, tearoom, gift shop and....a castle!

Our 2017 season begins on 2<sup>nd</sup> April. A season ticket will enable you to visit on any standard open day to enjoy the park, gardens, cycle trails and adventure playground.

At £22 for an individual and £50 for a family (2+3), it is great value. Other benefits include a tour of the castle, discount on purchases in the gift shop, one free visit to Easton Walled Gardens and one free visit to Sacrewell Farm near Peterborough.

Buy online from our secure website page. Grimsthorpe is able to accept Gift Aid on season tickets.

[www.grimsthorpe.co.uk](http://www.grimsthorpe.co.uk)  
**01778 591205 for details**

Charity Commission No 507478

Arboriculture Specialist

Domestic & Commercial

Fully Insured and Professional

All aspects of Tree Surgery, Tree Removal & Dismantles, Tree & Hedge Maintenance, Tree Pruning, Storm Damaged Trees

Bourne, Lincolnshire

Telephone: 01778 394183

Mobile: 07477 826015

Email: [garysgardens007@gmail.com](mailto:garysgardens007@gmail.com)



## COOMBE FARM BOARDING KENNELS

Wilsthorpe near Greatford  
Established family business for over 40 years

*Open all year.*

*Dogs walked twice daily.*

*Large, insulated, heated kennels.*

*Fully licensed. Inspection welcomed.*

**For Details please telephone**

**Lawrence Knipe on 01778 560574**

[www.coombefarmkennels.co.uk](http://www.coombefarmkennels.co.uk)

## Are you Fit 2 Go?

Do the rigours of daily life leave you feeling exhausted?

Would you benefit from having more energy and improving your health/ fitness levels?

Fit2Go Personal Training offers tailor made fitness programmes guaranteed to make you feel fitter, healthier and re-energised.

Contact: Linda Lawson 07985 284091;

Email: [Linda.lawson@fit2go.org.uk](mailto:Linda.lawson@fit2go.org.uk)

# Walk n Wag

- ❖ Dog Walking / Visits
- ❖ Market Deeping and Surrounding Areas
- ❖ Experienced ~ Responsible ~ Fully Insured
- ❖ Diploma in Animal Care
- ❖ Use of a fenced field for off lead fun & ideal for those dogs with less than perfect recall.
- ❖ Tailored to your needs.



**Tel: 01778 343406 ~ 07865 944202**

## David Palmer Tree Services

01778 348082

07930 718812

Services include:

- Tree removal
- Pruning
- Dead wooding
- Crown raising
- Stump grinding
- Hedge cutting



For a free, no obligation quote, please call us or email on [info@davidpalmer-treeservices.co.uk](mailto:info@davidpalmer-treeservices.co.uk)

£5 million Public liability, NPTC certified, all work carried out to BS3998

## LUXURY LODGE TO LET

Haveringland Country Park

Set in rural Norfolk - 20 minutes from Norwich and the Norfolk coast

2 bedrooms -  
1 double with en suite,  
1 twin and separate bathroom

Fully equipped kitchen,  
large open plan sitting & dining area

Smart TV & Wifi

Outside deck area with  
garden furniture & BBQ

Pets welcome

Contact Susan Fenner at  
[info@jeevescatering.com](mailto:info@jeevescatering.com)  
or telephone 01778 349512

## PAINTER & DECORATOR

Interior - Exterior - Paperhanging  
House shoes worn & clean dustsheets used.  
Fully insured friendly service, 5 star ratings.

Also WOOD CONSERVATION & REPAIRS

Contact Richard on  
**01778 421878 or 07759 250424**  
Or email: [rrbrundell@yahoo.co.uk](mailto:rrbrundell@yahoo.co.uk)

## LOVELLS LAKES

A1157 MAIN ROAD between  
West Deeping and Tallington

**Two well stocked coarse fishing lakes**  
Carp, Roach, Tench, Bream, Rudd, Chub, Crucians.

**£7 per day, £5 concessions**  
Parking behind most pegs

Open all year- just give us a call.  
Call Roly on 07514506885/01780 740223  
or Andy on 07801090458

## GREATFORD

August 2017

Church Flowers: Joan Aylett

Church Cleaning: Scilla Campbell and Caroline Anderson

# Kitchen Utensils

R	H	A	I	R	A	H	R	A	R	M	L	C	R
A	E	I	O	R	T	P	E	P	A	A	H	C	E
B	U	T	R	E	A	O	D	O	E	S	P	L	N
A	N	C	A	T	E	T	N	M	M	H	I	E	E
S	U	H	D	E	S	A	E	I	I	E	Z	A	P
C	T	O	A	M	B	T	L	C	X	R	Z	V	O
I	C	P	R	O	A	O	B	K	E	T	A	E	E
S	R	P	G	M	K	P	V	N	R	A	C	R	L
S	A	E	R	R	R	E	E	O	S	L	U	A	T
O	C	R	A	E	T	E	L	K	G	U	T	L	T
R	K	B	T	H	A	L	B	S	N	T	T	C	O
S	E	P	E	T	A	E	O	I	O	A	E	P	B
M	R	A	R	U	E	R	A	H	T	P	R	T	L
E	A	L	A	D	L	E	U	W	E	S	L	R	S

BLENDER  
 POTATO PEELER  
 PIZZA CUTTER  
 NUT CRACKER  
 TONGS  
 GRATER  
 WHISK  
 BEATER  
 CLEAVER  
 BOTTLE OPENER  
 MIXER  
 SCISSORS  
 CHOPPER  
 THERMOMETER  
 LADLE  
 SPATULA  
 MASHER

Play this puzzle online at : <http://thewordsearch.com/puzzle/36/>

**Church Services** this month are: 13th August Holy Communion at 9am; 27th Morning service at 9am. Please join us at these services, you will be very welcome.

**Getting to know our Neighbours on Friday 4<sup>th</sup> August from 6 to 8 pm.** Welcome to all our new neighbours. Our third meeting was again successful. Lois brought pictures and information about the village history, cuttings about the Village Hall from 1911, HRH Queen Elizabeth II Silver Jubilee 1977, Greatford School (1762-1983), footballers, Regiment pictures, Watercress beds, all of which proved very interesting to old and new residents. Nibbles will be provided, but please bring your own liquid refreshment. There will be a table for book swaps. Children are also very welcome as it is a Village event.

**Bellringing:** Greatford Practice night – Wednesday 23<sup>RD</sup> August 7:30 to 9pm. All welcome. Contact Lois Webb if you want to find out more about ringing. 01778 560437 or email [lois.m.webb1@gmail.com](mailto:lois.m.webb1@gmail.com)

**Carlby & District WI:** At the meeting on 4<sup>th</sup> July there was a thought provoking talk about 'The Medieval Gardner at Prebendal Manor' by Michael Brown. He reminded us how many of our garden plants are poisonous. The next meeting is at BRACEBOROUGH VILLAGE HALL at 7.30 on August 8<sup>th</sup> and the talk is about 'Hambleton Bakery' by Rob Hill and Julian. New members and visitors are always welcome. For further information please telephone 01778 392838.

**Mobile Library .** Visits are on Mondays near the phone box on Mondays from 12.00 to 12.30 on 7<sup>th</sup> August and 4<sup>th</sup> September. You can see a complete list of the stops at <https://lincolnshire.spydus.co.uk>.

**Flying the Flag:** Mark any special event by having the Union Flag or St George's Flag flown at the Village Hall (for a £5. contribution to Village Hall Funds) or outside the Church (£5. in aid of Church Funds). So far £175. has been donated to the village hall funds for flag flying since it began in May 2010. Please contact Cyril Webb on 560437 in either case or email: [lois.m.webb1@gmail.com](mailto:lois.m.webb1@gmail.com)) Flag flown on July 3rd for Chris G-White's birthday

**Parish Council:** The Draft Local Plan Document along with the supporting questionnaire can be viewed and downloaded from the Council website on the 3July 2017 using the following link [www.southkesteven.gov.uk/newlocalplan](http://www.southkesteven.gov.uk/newlocalplan). Consultation ends 11<sup>th</sup> August 2017. The Clerk would like some feedback on your thoughts about speed signs, are they having any effect?

**Continued Elsewhere:**

## Greatford Continued:

At the last Parish Council meeting on 23<sup>rd</sup> May, District Councillor Kelham Cooke was congratulated on his formal appointment as “Deputy Leader of South Kesteven DC” on 20<sup>th</sup> March 2017, and to LCC Rosemary Woolley on her win in the Local Council Elections in May.

We have applied for a grant for some additional play equipment and wont hear back until October whether we have been successful.

If you want to be on the Clerk’s email list for information on all village activities please let me know lois.m.webb1@gmail.com tel; 01778 560437

**Church** : The creation of a Loo and a Servery in the church remains contingent on a supply of water to the church at an affordable cost.

**Village Fete & Party** save the **16th September 2.30 - 8pm** diary, as the Greatford Village Hall Committee are arranging the ever popular village Fete and party. There will be music, the traditional Fete games and stalls (including Nigel's legendary cake stall) and some exciting new attractions including a Silent Auction. If you would like to be involved either in planning for or supporting the running of the event on the day please get in contact with Richard McDermott on 07701 370583. The date you have all been waiting for! A very good occasion for socialising and meeting new villagers too.

**The Hare and Hounds** is putting on a Beer Festival in the marquee from Thursday 10<sup>th</sup> to Sunday 13<sup>th</sup> August, 20 ales (+ the usual 8 at the bar) + ciders + country wines, live music and BBQ and hog roast.

## WEST DEEPING VILLAGE HALL

### HAVE YOU THOUGHT OF HAVING YOUR FUNCTION HERE?

There are tables and chairs for 60 people, licensed for 90 people, children’s tables and chairs for 12, overhead and/or dimming lighting, staging for band or disco, kitchen facilities and parking for 20 cars.

For further information and booking please contact Gill Edwards at 60 King St.

West Deeping 01778 345589.

## UFFINGTON PARISH COUNCIL

Report from Parish Council Meeting held on Wednesday, 5<sup>th</sup> July, 2017 in the Village Hall.

**Boundary fence between the Play Area and Barclay House** - The Hearing held at Peterborough County Court regarding the case brought against Cllr. P. Genever by Mr. A. Navid was dismissed for lack of evidence.

**School Field** – It has been confirmed by Uffington School that their Public Liability Insurance covers the use of the field at all times (obviously out of school hours). It was asked for school property to be respected when field was in use and suitable notices would be erected.

It is hoped to have a defibrillator installed in the village in the near future. More information later.

**Play Area** – The fence around the toddlers part of the play area will be erected shortly.

The direction arm taken down from the Heritage sign post on “Jack Jackson’s” corner due to it being potentially dangerous to the tenant in the bungalow is to be held in the Village Archive Cupboard in the Village Hall.

C.Cllr. Woolley reported that since the Grenfield tragedy LCC have reviewed all County Council Buildings regarding ACM cladding. From 360 schools only one in Horncastle and four others require investigation.

Lincoln Castle has been voted the most popular castle to visit beating 11 others. A copy of the full unapproved Minutes are on the Uffington Web site.

Date of next meeting Wednesday, 16<sup>th</sup> August, 2017 at 8 p.m. in the Village Hall.

# HANDYMAN

For All Your Household Repairs

Joinery, Painting, Decorating,  
Shelves, Skirtings, Covings,  
Light Fittings Etc.



01780 591313 / 07847922844

 **Arboriculture Specialist**

 **Domestic & Commercial**

 **Fully Insured and Professional**

 **All aspects of Tree Surgery, Tree Removal & Dismantles, Tree & Hedge Maintenance, Tree Pruning, Storm Damaged Trees**

*Bourne, Lincolnshire*

**Telephone: 01778 394183**

**Mobile: 07477 826015**

**Email: garysgardens007@gmail.com**



## Evan McLaren Tree Services

ALL ASPECTS OF  
TREE WORK INCLUDING

Tree Inspections & Tree Removal  
Pruning & Dead Wooding  
Stump Grinding & Hedge Work

**FREE QUOTATIONS**

Tel: 01778 426792 Mob: 07990706750

*Fully qualified, NTCP certified, £5 million Public Liability*

## Creative Touch

INTERIORS & DESIGN

BESPOKE SOFT FURNISHINGS, MADE IN OUR OWN WORKROOM



Beautifully Bespoke Curtains, Blinds & Accessories,  
Wallpaper, Paint, Carpets and Lighting...

**01778 345777**

[www.creativetouchinteriors.co.uk](http://www.creativetouchinteriors.co.uk) | [info@creativetouchinteriors.co.uk](mailto:info@creativetouchinteriors.co.uk)



**The Mulberry Bush**  
Childcare and Education Centre

Telephone Georgie: 01780 755322

[www.themulberrybushchildcare.co.uk](http://www.themulberrybushchildcare.co.uk)

Come and meet our dedicated team  
at 47 Main Road, Uffington PE9 4SN

### Early Learning in Partnership with Parents

Supporting families in Stamford, Uffington and all surrounding villages

After school &  
Breakfast clubs  
for children 4-8yrs

Day Nursery  
8am - 6pm for  
Babies 0-2 yrs  
Toddlers 2-3yrs  
Pre-school 3-4yrs

Early Education  
& Funded Places for  
Toddlers 2-3yrs  
Pre-school 3-4yrs

Book your  
child's place  
NOW



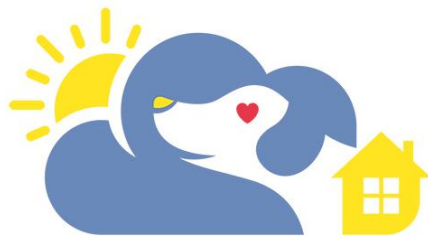
### Happy Dog, Happy Holiday, Happy You!

We have been successfully providing local home  
from home dog holidays for over 10 years

Why not join our local Host Community -  
because life is more sociable with a dog!

For more info contact Kerry Wells -  
01780 322008 or  
email [kerry.wells@barkingmad.uk.com](mailto:kerry.wells@barkingmad.uk.com)

[www.barkingmad.uk.com](http://www.barkingmad.uk.com)



## Barking Mad

**Happy Dog. Happy Holiday.  
Happy You.**

### CUSTOMLAWNCARE

PROFESSIONAL LAWN TREATMENT

Spring & Summer,  
Autumn & Winter  
Treatments for your  
lawn at a price that  
doesn't cost the earth.

FOR A FREE QUOTATION  
CALL US ON;

**01780 753575**

Andrew Carr  
T: 01780 753575 M: 07734693253 E: [andy@customlawncare.co.uk](mailto:andy@customlawncare.co.uk)  
[www.customlawncare.co.uk](http://www.customlawncare.co.uk) | 2 Tobias Grove, Stamford, Lincolnshire PE9 4BD



- Weed and moss control
- Scarification
- Hollowtine aeration
- Fertilisation

*Your local professional  
lawn treatment service.*

# NEIL PARMENTER CONTRACTORS



**Langtoft Lincs**



All aspects of building from extensions to  
driveways / drainage / digger & dumper hire

builder / groundworker / landscaper

Tel: 07718665206

neil@neilparmenter.com

# VILLAGE WINDOW CLEANING

Windows, Frames &  
Surrounds Cleaned  
Soffits & Fascias  
Regular Reliable Service  
Purified Water Pole System  
(No Ladders – No Damage)

For a cleaner clean  
Call STEVE on

01733 327 265  
07789 056 256

EVERY WINDOW WITHIN REACH

# PAINTER & DECORATOR

**Insured**  
**References Available**  
**Local Resident**  
**Wallpapering**  
**Free Quotes**

**Jason Kendall**

**Tel: 01778 426 409**

**T.J.Dyer**

**Domestic Project Manager**

Conservatories - New Windows  
Electrics - New Doors - Plastering  
New Kitchen - New Heating  
New Bathroom - New Boiler  
Tiling - Flooring - New Fireplace  
- Extensions - Decorating  
New Fascias/Soffits etc  
Or any combination of the above.

Complete refurbishments  
for re-sale or letting

Don't know who to turn to first?  
Let me manage it all for you,  
under one package.  
Quotations for all specifications  
and budgets available  
Over Ten Years' experience

**Tim Dyer**  
01778 219242 or 07534 943726  
tjdye@tiscali.co.uk

*Stamford*  
FENCING

**All types of garden fencing  
supplied and installed:**

- Closeboard
- Panel
- Palisade / Picket
- Trellis
- Post and Rail
- Gates

**Stamford, Bourne, The Deepings  
and surrounding villages.**

**For a free quotation phone:  
01780 322 500 / 07342 354 434  
www.stamfordfencing.co.uk**

 **a.d.walker**  
plumbing & heating engineer

28 Lindsey Road, Uffington, Nr Stamford, Lincs, PE9 4SH

**Tel: 01780 752311 Mob: 07712 771105**



**City &  
Guilds**



- ⊕ Boiler Servicing & Breakdowns
- ⊕ Landlords Gas Safety Checks
- ⊕ Plumbing & Heating Maintenance
- ⊕ Un-vented Hot Water Servicing & Maintenance
- ⊕ Qualified Natgas & LPG
- ⊕ Chemical Heating System Cleaning

## WEST DEEPING

**St Andrews Church.** The next All Age Service will be on Sunday 20<sup>th</sup> August at 10.30am followed by refreshments. Contact Colin, 01778 348709; colin.blagrove@ntworld.com

**Bible Studies.** Tuesdays, 8<sup>th</sup> August and 22nd August. 2.45 for 3pm at Cromwell House. Contact: Susanna Aldred on 01778 380014.

**WD Walkers.** Sundays. 30 July, led by Roger and Joy. 13<sup>th</sup> August is a local walk. 27<sup>th</sup> August led by Iain and Jean 01778 343263. Meet outside the Village Hall, at 2pm. Contact: Annie: 01778 346805, snewbigging@talktalk.net

**Coffee Morning.** Saturday 19<sup>th</sup> August. 10.30am-12noon\_WD Village Hall. Call in for a cup of tea or coffee and a chat. Donations for St. Andrew's Church. Raffle, cake/produce stall. All are welcome.

**Carpet Bowls Club.** The group meets on Thursday evenings in the Village Hall. See centre pages. Chairperson: June Thomas 01778 343434.

**Rambling Readers.** Friday 25<sup>th</sup> August. 7.45pm. West Deeping Village Hall. If you are interested in reading a new book each month supplied by Lincolnshire Libraries please talk to Elizabeth at 01778 344674. Or just come along for a taster session.

**West Deeping Heritage Group.** Tuesday 5<sup>th</sup> Sept. 7 for 7.30 pm WDVH The first talk in the Autumn programme is "Not All Bling! 20 Years of Treasure". Join Helen Fowler, Peterborough and Cambridgeshire's Finds Liaison Officer, for this illustrated talk about the shiny, and not so shiny, historic items found by the public. All welcome £2.50.

**Telephone box:** After a lengthy consultation process and disconnection of the phone by BT, the Parish Council have now "adopted" the 1935 red phone box on King Street. West Deeping Heritage Group are proposing to set up a mini-museum and are looking for ideas, contributions and volunteers! Contact Maggie Ashcroft, 01778 344768 or wdheritage@hotmail.co.uk

**Classes in the Village Hall: Step Clog.** Fortnightly on Mondays 8-9.30pm. Call Laura 01733 267129, leaving a contact number or email laura.clogteacher@gmail.com

**The Midsummer Magic Open Village** event in June was a great success. Thank you to all those who supported the event and made it so enjoyable.

## UFFINGTON

### Church Flowers

6<sup>th</sup> /13<sup>th</sup> Aug - Sue Webster  
20<sup>th</sup>/27<sup>th</sup> Aug - FREE

**Flying the Flag.** Either the Union Jack or St George's Flag was flown as follows:

Date	Event	Sponsor(s)
30 <sup>th</sup> July	Christening of Henry Crompton Webster	Martin & Sue Webster
1 <sup>st</sup> Aug	Yorkshire Day	Penny Seymour

Mark your special date by sponsoring either the Union Jack or St George's flag, and make a £5 donation to Church funds. Contact David & Gail Genever or Graham Creedy (481084)

**Uffington Village Hall is self-funding.** To keep the village hall open new classes have been booked for you to enjoy. Starting in September: Movement to Music class Tuesdays 10am, Pilates Wednesdays 9am, Mindfulness course Thursdays at noon. These are in addition to the regular classes of Yoga on Mondays at 9.30am and children's dance classes on Tuesdays and Thursdays from 5pm. Wednesday Club runs 2pm - 4pm twice a month. A Cake and Biscuit Decorating Workshop will be held Saturday 9<sup>th</sup> September, with the popular Garden Produce Show on Sunday 10 September. By attending a class or an event you are contributing towards the £350 a month it costs to run the hall. Follow us on Twitter to see what's planned for July – Dec @UffVillHall or contact Vanessa Kimberley 01780 239463 E:secretary@uffingtonvillagehall.org.uk. Get actively involved.

**Uffington Parish Council.** At the recent meeting complaints were received regarding dog fouling on the grass area alongside the Bertie Lane to Casewick Lane footpath. Could dog owners please clean up after their dog not only is this unsightly but it is dangerous especially to children. The District Council is advertising a "Big Clean" for the district. It was suggested at the Parish Council that weeds that are growing in the gutters and verges outside residents properties in Uffington that these perhaps could be removed by the house owner and if they have an elderly neighbour offer to do theirs. This would certainly help to make the village look tidier. We all know that this should be done by the Council but with the shortage of funds every little helps.

**David's Country Life** – a book by David Genever – is available for £8.95. Contact Gail or David on 01780 765005 or call in to the Bertie Arms

**CHURCH SERVICES AND DIARY DATES  
FOR AUGUST 2017 VOLUME 32 NUMBER 5**

Sunday	Monday	Tuesday
		<b>1<sup>st</sup></b>
		5-8pm UffVH Childrens Dance Classes
<b>6<sup>th</sup></b>	<b>7<sup>th</sup></b>	<b>8<sup>th</sup></b>
<b>Transfiguration of Our Lord</b> 9am Braceborough HC 10.30am WDeeping MP 10.30am Wilsthorpe HC & Baptism 10.30am Uffington HC 6pm Barholm EP	9.30-10.45am UffVH Yoga	10am Group Prayer Meeting 5-8pm UffVH Childrens Dance Classes
<b>13<sup>th</sup></b>	<b>14<sup>th</sup></b>	<b>15<sup>th</sup></b>
<b>Trinity 4</b> 9am Greatford HC 10.30am Uffington MP 10.30am WDeeping HC 2pm WDeeping Walkers 6pm Tallington EP		5-8pm UffVH Childrens Dance Classes
<b>20<sup>th</sup></b>	<b>21<sup>st</sup></b>	<b>22<sup>nd</sup></b>
<b>Trinity 5</b> 9am Barholm HC 10.30am Uffington HC 10.30am WDeeping MP	9.30-10.45am UffVH Yoga	5-8pm UffVH Childrens Dance Classes
<b>27<sup>th</sup></b>	<b>28<sup>th</sup></b>	<b>29<sup>th</sup></b>
<b>Trinity 7</b> 9am Greatford AAW 10.30am WDeeping HC 10.30am Uffington AAW 10.30am Tallington HC 2pm WDeeping Walkers		5-8pm UffVH Childrens Dance Classes

Wednesday	Thursday	Friday	Saturday
<b>2<sup>nd</sup></b>	<b>3<sup>rd</sup></b>	<b>4<sup>th</sup></b>	<b>5<sup>th</sup></b>
7.30pm UffVH WI East Anglian Air Ambulance Competition: A favourite holiday photograph	5-7pm UffVH Childrens Dance Classes 8-10pm WDVH Bowls		
<b>9<sup>th</sup></b>	<b>10<sup>th</sup></b>	<b>11<sup>th</sup></b>	<b>12<sup>th</sup></b>
2-4pm UffVH Wednesday Club	5-7pm UffVH Childrens Dance Classes 8-10pm WDVH Bowls		
<b>16<sup>th</sup></b>	<b>17<sup>th</sup></b>	<b>18<sup>th</sup></b>	<b>19<sup>th</sup></b>
	Noon-1pm UffVH Mindfulness Taster Course 5-7pm UffVH Childrens Dance Classes 8-10pm WDVH Bowls		10.30am WDVH St Andrew's Church Coffee Morning
<b>23<sup>rd</sup></b>	<b>24<sup>th</sup></b>	<b>25<sup>th</sup></b>	<b>26<sup>th</sup></b>
2-4pm UffVH Wednesday Club 7.30pm Tallington Group Prayer Meeting	5-7pm UffVH Childrens Dance Classes 8-10pm WDVH Bowls	7.45pm WDVH Rambling Readers	
<b>30<sup>th</sup></b>	<b>31<sup>st</sup></b>		
	5-7pm UffVH Childrens Dance Classes 8-10pm WDVH Bowls		