

20% discount on first weeks fees when you enrol



abc day nursery

and out of school club

We provide holiday care for 4 - 13 year olds

We are situated in Tallington, just off the A16 on Barholm Road PE9 4RJ
a.b.c. Day Nursery and out of school club operate from a mobile building set in 3.5 acres with a large play area. This has been thoughtfully designed to provide flexible childcare facilities for children aged 6 weeks to 13 years.

Our highly trained enthusiastic staff provide a stimulating and caring environment.

15 hours free per week for 3 - 4 year olds

We are open Monday to Friday 8 am to 6 pm
For more information please telephone 01778 343111
Proprietors - Tracy Neal and Ann Rawden
Email - info@abc-daynursery.com

Ofsted said "children enjoy their time at nursery and arrive happy to start their day"

FUSION OF MARKET DEEPING

Serving All Surrounding Villages

Made To Measure:

Curtains: Roman Blinds:
Soft Furnishings: Verticals: Rollers, Venetians etc

Fusion offers a home visit service for those who find it difficult to visit the shop in Market Deeping. Free Quotations given at competitive prices.

Call now for current offers:

01778 344202

or visit 3 High St, Market Deeping

Email fusionshop@hotmail.co.uk or visit www.designatfusion.co.uk



Stay Pressed

Overwhelmed by your ironing pile. We can help to take the hassle out of housework. Convenient Ironing service with consistently high standards.

Contact Simon
07787557122

email -simon@perfectstorminc.co.uk

We collect and deliver to make life easier. Call or Email for a free quote

St Lawrence's Tallington St Faith's Wilsthorpe
St Martin's Barholm

Towers & Spires

NEWS AND EVENTS FROM THE VILLAGES

FEBRUARY 2015

St Andrew's West Deeping St Margaret's Braceborough St Thomas' Greatford

St Michael & All Angels Uffington

BRACEBOROUGH HALL RETIREMENT HOME

An elegant, Victorian residence set in 1.5 acres of beautiful grounds that provides comfort, care and security whilst encouraging residents to pursue their own lifestyles.

24 hour care provided in a calm friendly atmosphere for long term, respite and convalescent residents.

Single en suite, single and companion rooms.

Fees fully inclusive of hairdressing, chiropody, outings and social activities.

**For brochure or informal visit please contact Sue Burcham RGN
Tel: (01778) 560649 or 560831**



INCLUSIVE CHILDMINDER (OFSTED Registered)

Full or Part-time care offered at Tallington
*All your child care requirements
met in a safe and friendly
home environment.*

Call Anita on 01780-749373

Jeremy Harrison MICHT

27 The Green, Thurlby, PE10 0HB
TEL: 01778 219408

Sports Massage, Reflexology, Reiki

Alleviate:
Backache, Shoulder Problems, Stress, Digestive
Disorders, Hormonal Imbalance, Sinus Problems.

Gift vouchers available

VILLAGE REPRESENTATIVES

Barholm with Stow - Mrs C Baldwin.
Tel: 01778 560586

Braceborough - Mrs F Grindey,
Tel: 01778 560570

Greatford - Mrs B Everitt,
Tel: 01778 560473

Tallington - Mrs L Pollock
Tel 01780 740445

Uffington - Mrs Gail Genever,
Tel: 01780 765005
gailgenever@btinternet.com

West Deeping - Jean Stowe
Tel: 01778 346779
jean@stowe.vispa.com or
jean.stowe@abelgratis.com

Wilsthorpe - Mrs V Stuart,
Brook House, Wilsthorpe



Paul Green

Painting, Decorating - Interiors and Exteriors

Fully Qualified, 30 years' experience

Two year Dulux backed guarantee

For a **FREE** Estimate

Tel: 01778 344478
Mobile: 07974 939120



Call Anthea in Thurlby on
01778 423681 / 07976 267040

PIANO TUITION

Preparation for
Associated Board Exams
or just for pleasure

Children and adults catered for

Pamela Westgate
01780 740879

CAROL'S DOMESTICS

All Domestic Cleaning & Ironing

£10 per hour

Contact Carol on

07851 475651

Wendy Cray Beauty Therapist

20 years experience as a mobile therapist
Now offering treatments from a beauty salon in
West Deeping

**By Appointment Only
To Book Please Call**

07759 367921
Female Clients Only

CLERGY

Rector: Carolyn Kennedy
Tel: 01780 481786

E-mail: rector@uffingtongroup.org.uk

**EDITORIAL SECRETARY
Mrs Gail Genever,**

Uffington Tel: 01780 765005
gailgenever@btinternet.com

**PREPARATION FOR PRINTING
Pete Hickman**

Tel: 01780 754417

Please e-mail your copy (in MS Word please)
to towersandspires@hotmail.co.uk

**PLEASE NOTE THAT ALL COPY MUST REACH
GAIL & PETE BY THE 16TH OF THE MONTH TO
BE INCLUDED IN NEXT MONTH'S ISSUE**

ADVERTISING

If you want to advertise in this magazine or
have any enquiries about our advertising or
leaflet delivery service, contact Pete Hickman
on 01780 754417

CUSTOMLAWNCARE PROFESSIONAL LAWN TREATMENT

Spring & Summer,
Autumn & Winter
Treatments for your
lawn at a price that
doesn't cost the earth.

FOR A FREE QUOTATION
CALL US ON:

01780 753575

Andrew Carr
T: 01780 753575 M: 07734693253 E: andy@customlawncare.co.uk
www.customlawncare.co.uk | 2 Tobias Grove, Stamford, Lincolnshire PE9 4BD



- Weed and moss control
- Scarification
- Hollowtine aeration
- Fertilisation

*Your local professional
lawn treatment service.*

WILDLIFE & GARDENING IN FEBRUARY

A friend sent us a photo of a Hellebore in full flower on the 8th January – he had been clearing brambles in a rather neglected corner of the garden and discovered the hidden beautiful pink and white speckled blooms!

Hellebores flower from January through to the end of March, which usually coincides with the 6 weeks of Lent in the Church's year – hence their name of Lenten Roses. More formally they are called *Helleborus x hybridus* – a change of name from the old name of *Helleborus orientalis*. Hellebores flower when few other plants are providing colour in the garden, and range from cream to deep purple, sometimes with white, pink and green, and speckles and splashes. They freely hybridise, which leads to the wide range of sometimes unexpected colours! The flowers hang down (making it easier for pollinating bumble bees) but which can be cut on short stems and floated in a dish of water – likened to tabletop waterlilies!

Hellebores are really woodland plants (flowering before most of the trees and shrubs have leaves) and they like the shelter and the summer shade, and also the rich soil provided by the annual leaf fall. Hellebores have to be tolerant of dry conditions and for this reason have deep roots, but they don't like poor drainage or wet soils like heavy clay.

Hellebores have rather leathery leaves that can stay on the plant all year until replaced by new ones in the spring. As the leaves get older they are prone to a fungal infection, causing brown blotches on the leaves which then turn yellow and die. Monty Don recommends removing these old leaves during January, and, if they are infected, to burn them rather than compost them.

A number of gardens open for their spring flower displays, and a local one where a range of colourful Hellebores can be seen is the 'winter garden' in the National Trust's property at Anglesey Abbey, near Cambridge – for details see www.nationaltrust.org.uk/anglesey-abbey. **Donna and Tim**

WELLAND MOTHERS' UNION

Monday, 16th Feb 2pm at Elizabeth's home, West Deeping. Suzy Grigson will talk about the Chernobyl children. For further information from Elizabeth Noble 01778 344674 or Anne Batty 01780 740151.

FROM THE REGISTERS

Wedding

20th December West Deeping Piers Joseph Ward &
Joanna Elizabeth Grigson

The Rectory, Uffington

Dear All

How are you getting on with your New Year's resolutions? Going strong? Given up already? Or not even started yet?

Well, now you have another chance – but a slightly different one. New Year's resolutions tend to be about giving up bad habits and trying to improve our health – and because they're about changing for the better, there's no end time, we know they really ought to be permanent changes. And that's probably what makes them so hard to keep.

This month, tho, we have Ash Wednesday, and the beginning of Lent. It's another chance for a fresh start – but it's not quite the same thing. In Lent, the emphasis is about our souls more than our bodies – thinking about our spirituality, reviewing our relationship with God, and making the time to improve it. The things we give up in Lent are the modern day version of a fast, so we don't give up bad habits, but things we enjoy – chocolate, or the daily crossword, or Candy Crush. And it's not giving up for ever – just giving up until Easter, at the very beginning of April this year.

So why bother giving things up? It's about shifting our priorities, so that what we want comes a bit further down the list for a few weeks; it's about making good use of the the time or the money freed by our sacrifice. For churchgoers, the time might be spent in prayer or reading the Bible or going to a Lent study group; for others, it might be a good time to think about where you are in life, what's important to you. For anyone, religious or not, Lent can be a good time for being charitable – giving away what we save from not eating chocolate, giving our time to a good cause – and that might be a charity, or it might be spending time with family, friends or neighbours – or getting in touch with someone we used to know well, but now just exchange Christmas cards with.

And because it's all for a limited time, it's achievable – so it's definitely worth a try. And I wish you all the best, however you use this Lent, as we get ready for the joy of Easter.

Yours,

Carolyn Kennedy.

BRACEBOROUGH

Holy Communion – Sunday 1st February at 9am, St Margaret’s Church. Everyone welcome. Please come along.

Annual PCC Meeting – Tuesday 24th February – 6pm in Village Hall. The annual meeting will be held to elect officers, review the past year’s accounts and reports together with any other relevant business.

Christmas Cards. The collection for Cancer Research, in lieu of village Christmas Cards, raised the magnificent total of £231. The Charity was delighted to receive such a significant sum. It is planned to repeat the idea next Christmas, but possibly for a local charity such as a hospice or Air Ambulance. Many thanks to all those who contributed so generously.

Carol Service. Thank you to all those who supported us on Christmas Eve at the annual carol service. Our thanks go to all those involved in decorating the church, contributing to the service and organising refreshments afterwards in the village hall – and to the 100+ congregation! Each year changes are made to the service content, of which, some find more favour than others. Following recent feedback from a number of people, in 2015 we plan returning to a previous format which concentrates on popular carols, a blend of traditional and modern readings and, hopefully, musical contributions from youngsters. If you have other ideas or requests, please contact Malcolm to discuss.

Dates for the Diary

Saturday 22nd February – The Shannon Reilly Trio – in concert at the Village Hall.

Enjoy an intimate evening of popular jazz with a dazzling selection of songs from the 1930s to the present day. Shannon Reilly is a vocalist of exceptional quality and her spellbound performances have captivated audiences across the UK. Pat McCarthy on guitar has performed with countless British jazz artistes & Warren Jolly on double bass has been in constant demand as a session player and side man with some of the best known names in jazz and pop. Tickets: Adults £10, Children £5, Family (2+2) £25. Doors open 7.30pm for 8pm start.

St Margaret’s & St Faith’s will be jointly welcoming U3A who are visiting the village on 2 more occasions in the New Year – 5th March & 12th March. On each occasion we shall provide a tea and a talk on various aspects of historical and general interest. Some help with baking a cake and with serving the teas would be very welcome. Please contact Lyn or Malcolm on 561153 if you can help out.

Sunday 12th - Sunday Lunch in Village Hall. Traditional homemade roast lunch and dessert. 12.30pm for 1pm. Adults £8, Children £4. Licensed Bar, Raffle. In aid of church funds.

Fly The Flag. It costs just £5 to fly the flag to celebrate a birthday, anniversary or any other memorable or special event. Please contact James or Hazel.

WEST DEEPING

West Deeping Walkers. Sundays – 1st February is led by Iain and Jean 01778 346779. 15th February by Maggie and Pete 01778 344768. Meet outside the Village Hall at 1.45pm. Contact: Annie Newbigging 01778 346805. Email: snewbigging@talktalk.net

Parish Council. Monday 9th February 6pm West Deeping Village Hall. The rail crossing closure proposals will be presented by Network Rail’s consultants prior to the Council meeting at 7.30pm.

Bible Studies. Tuesdays – 10th and 24th February. 2.45 for 3.00pm at Cromwell House followed by tea with our hosts Susanna and Ian. Contact: Allen Calvert 01778 344208.

Coffee Morning. Saturday 21st February. 10.30am-12noon. West Deeping Village Hall. Call in for a tea/coffee and a chat. Donations for St. Andrew’s Church. Raffle, cake/produce stall; activities for children. All are welcome.

Carpet Bowls Club. The group meets on Wednesday afternoons and Thursday evenings in the Village Hall. See centre pages. Chairperson: June Thomas 01778 343434.

Rambling Readers. Friday 27th February 7.45pm. West Deeping Village Hall. If you are interested in reading a new book each month supplied by Lincolnshire Libraries please touch base with Elizabeth at 01778 344674. Or just come along for a taster session.

Lincolnshire Rural Arts. Saturday 28th February 7.30pm West Deeping Village Hall. *Something Fishy presented by Ginny Davis Productions.* Suitable for ages 11+. Tickets cost £8 (under 16 £5) and they are available from David James, 01778 380197: david@thelane.me.uk Early booking is advisable as these performances sell out quickly.

West Deeping Heritage Group. Tuesday 24th February “Uffington Revisited” What began as Nick Sheehan’s idle curiosity about a cryptically-named spinney on the outskirts of the village quickly developed into a quest to produce a definitive account of Uffington’s history from the Conquest to the present day. Everyone welcome, £2.50 at the door, refreshments included. Please contact Melanie James if you would like to be added to our contact list: 01778 380197: wdheritage@hotmail.co.uk or visit wdheritage.wordpress.com

Classes - West Deeping Village Hall. Classes are running at present:

Step Clog Classes - Fortnightly on Mondays 8-9.30pm, beginners, any age. Hard-soled shoes are required, not trainers, to hear the patterns of the steps. Call Laura 01733 267129, leave your name and contact number and she will get in touch with you.

Tiny Talk – sign language for babies. Thursday mornings 11am -12noon. For more details ask Hannah Davies M 07970 782790, email hannahd@tinytalk.co.uk

If you want to know more or would like to attend a taster session contact the organizers.

AD Walker Plumbing & Heating Limited

28 Lindsey Road, Uffington, Nr Stamford, Lincs, PE9 4SH
Tel: 01780 752311 Mob: 07712 771105



- ⊕ Boiler Servicing & Breakdowns ⊖ Landlords Gas Safety Checks
- ⊖ Plumbing & Heating Maintenance
- ⊕ Un-vented Hot Water Servicing & Maintenance
- ⊖ Qualified Natgas & LPG ⊕ Chemical Heating System Cleaning

JC LOGS

*We supply seasoned hardwood cut and split ready for the fire.
Delivered to your door by transit tipper.*

Full Load £125
Half Load £70

To place an order call
01780 756375 or 07984 563629

PLANTS POSH POOCHES PROFESSIONAL DOG GROOMING

- * SPECIALIST BATHING AND STYLING
- * CLIPPING AND SCISSORING
- * PUPPY TRIMS
- * NAIL TRIMMING, EAR CLEANING AND
ANAL GLAND CHECKING
- * WEBSITE AVAILABLE WITH PICTURES
plantsposhpooches.co.uk

CALL HANNAH ON
07562499223

PLANTSPOSHPOOCHES@HOTMAIL.CO.UK



Established 2000, an expansion of
Rachel Bassill Oriental Carpets est. 1994

Rachel and Tony Simpson are open:

Tuesday – Saturday 10am-5pm

2 High Street East, Uppingham, LE15 9PZ
Tel. 01572 829927

Sales – In House Cleaning –
In house Restoration – Bespoke –
Try at home – Collection & Delivery

Antique and Contemporary Oriental rugs,
Carpets, Kilims, Textiles, cushions,
stretcher mounted fragments
& furniture

www.therugstudio.co.uk

FOOT CARE CLINIC

Professional Foot Care Treatments

SARAH WOOLF

MCFHP MAFHP

Registered Member of the British Association of
Foot Health Professionals

Providing a personal service for foot health
treatments, pedicures and nail enamelling

For more information and to book an appointment

Tel: 01780 480750

5 Main Road Uffington



THE LITTLE DOG HOUSE

Luxury home boarding for small dogs

No kennels, no big dogs, just our
comfortable home surroundings.

Large enclosed garden, country walks,
a warm bed & lots of love!

www.thelittledoghouse.co.uk

Tel: 01778 425947 or 07940 872026

Ben Freeman

Your Local Supplier of
Topsoil, Turf, Hardcore & Aggregates from 1 to 20 tonne.

Landscaping, Hedge Management, Driveway Maintenance and
Contract Work undertaken.

For a Competitive Free Quote contact Ben on:
07703337128 or 01780 238376 or 01778 345887

also find us on Facebook; email ben.freeman10@btinternet.com
or go to www.benfreemanuk.co.uk



Love your computer again!

I can fix most hardware and
software issues in your home!
All work GUARANTEED

Home and business network installation and
support

Hardware repairs and upgrades
Health check and service, virus removal
Internet help

Remote desktop support

PC and MAC software support

Data management and cloud storage/backup tuition



New Service TV and Audio equipment set up
Want to watch iPlayer and itv player on your TV?
You can!!

Give me a call on 01780 721663 or 07733323657
email dennis@computechnique.co.uk

www.computechnique.co.uk



4mostBLINDS

LUXURY FABRICS @ AFFORDABLE PRICES

01778 342658 or 07711812881

HIGH QUALITY-FRIENDLY SERVICE

Verticals from 3 for £175*

OUR EVERYDAY PRICES ARE USUALLY BETTER
THAN THE 50% OFF SALE PRICES OF OTHER
NATIONAL COMPANIES

ROLLERS, VENETIANS & VERTICALS
ROMANS, PLEATS, PERFECT FIT, INTU

NEW SEASON FABRICS
RANGES AVAILABLE NOW

Much work gained via Recommendations

FREE Quote + Fitting + Guarantee
and NO HARD SELL - That's a PROMISE

*Selected fabrics - Offers may change without notice
Happy to support Towers and Spires

Fentons of Bourne Ltd

LAWNMOWER

**Sales
Service
Repairs
Parts**

Ride on & Pedestrian Mowers:

Take advantage of our servicing special prices. Call for details.
Any other work required will be charged additionally to cover parts cost and labour at £30inc VAT per hour.

Kates Bridge, Nr Thurlby, Bourne, Lincs PE10 0EN

Tel: 01778560466

email: info@fentonsofbourne.co.uk www.fentonsofbourne.co.uk

Hayter Stiga Lawnflite Mountfield MTD CubCadet

KEITH PIKE ATT, ACIB

Personal Taxation Adviser

Are you paying too much tax? For help with:

- completing your Personal Tax Return
- your Self-Assessment calculation
- claiming allowances/reliefs due to you
- capital gains tax calculations

Contact Keith Pike on 01832 281086
Email: kmpike425@btinternet.com
19 River Lane, Elton PE8 6RG



BARRY BAKER
VEHICLE ACCIDENT REPAIRS
STOWE ROAD
GREATFORD
STAMFORD PE9 4PS



Low Bake Spray Booth
Body Jigging Facilities
Computerised Wheel Alignment
Courtesy Cars Available

Tel: 01778 560404
Fax: 01778 560777

Jeeves Catering - For Business and Pleasure

From catering to complete event management

- Local caterers -Established since 1995
- All occasions weddings, parties, corporate entertaining, christenings, shoot lunches, picnics, funerals
- Barbeques, buffets, hot and cold food, canapés
- English tea parties served on our complimentary range of vintage china
- Catering at any venue, marquees, village halls, homes and work spaces
- All party extras can be arranged for example marquees, bars, discos and photographers



Visit our website to view menus and prices -

www.jeevescatering.com

To discuss a forthcoming event please call Susan Fenner on

01778 349512

Email: info@jeevescatering.com

Jeeves Catering 41 High Street, Maxey, Peterborough PE6 9EE

HOME CHOOSE CARPETS Est. 30 Yrs THE DEEPINGS CARPET CENTRE



"The Carpet Shop That Comes To You"

Your Local Carpet Takeaway - The Deepings only Carpet Stockists



No Obligation
Quotes

QUALITY
PROFESSIONAL
HOME SERVICE

- Carpets
- Vinyl
- Laminate / Wood
- Karndean

We also supply
and fit
Vertical, Roller
& Venetian
Blinds



Extensive & Exclusive
Ranges

1000s of Samples

7 Days a week
Day / Evening

Discount for
Full House
All Work Fitted
and Guaranteed



Call Bill Woods

01778 346918
www.homechoose-carpets.co.uk

Visit our showroom at: Unit K, Bentley Business Park, Blenheim Way
Northfields Industrial Estate, Market Deeping (Opposite The Inside Out Store)
Showroom open Monday to Friday 9:00 - 4:45, Saturday 9:30 - 3:30

TALLINGTON PARISH COUNCIL

Tallington Level Crossing Closure – Update at 14th January 2015

At last our fate is known and it is not good news for Tallington!

Network Rail came to Tallington on 13th January and visited properties affected by their preferred option to close the level crossing. They also attended our Parish Council Meeting that evening.

After over a year of misinformation, poor communication, confusion, change of consultants and heartache for some residents Network Rail presented their preferred route for the second stage consultation period. It is a route that was never shown in the first stage consultation period. We have now exchanged one set of residents with a new set of residents who are upset about this new route.

The preferred route now comprises a new highway to the east of the railway and a bridge over the railway and adjoining footbridge to the north of the existing level crossing. The new road on the village side of the bridge will go westwards and then turn left into the field next to the Manor House and exit at the bend on Main Road (A1175).

This proposal has not been well received in Tallington. It is yet another unacceptable “in village route” that will not bring any benefits to Tallington. In fact we believe that this proposal will bring more traffic and pollution to Tallington.

Network Rail is holding “Exhibition Days” on Wednesday 21st January from 4 to 8pm and Saturday 31st January from 11am to 3pm in the village hall. We would urge as many residents of Tallington as possible to attend and record their comments on the Network Rail proposal. Network Rail cancelled the two initial “in village” routes after receiving 160 comments/objections. Let us hope that a similar number of comments/objections are also received for this proposal and Network Rail has to rethink their proposals.

On the same days at the same times the “Thurlby Alternative Proposal” will be displayed in the village hall. On a more positive note this alternative proposal is now being actively progressed by local residents. It is basically a full bypass for the village. Consultants have been appointed. It is an ideal solution that will once and for all solve the traffic problems in Tallington and the Parish Council is very enthusiastic about this proposal. To partly pay for the proposal a degree of development is required involving housing and light industrial units. We eagerly await more details before the residents of Tallington can be approached for their support. We are sure that support will be forthcoming. A planning application will then be submitted and positive vibes have been received from the planning authority that the application will be well received.

In conclusion our hopes are that the “Thurlby Alternative Proposal” will be the actual solution for Tallington and the “in village” route proposed by Network Rail will, like the previous “in village” routes be dropped.

TALLINGTON

Church Flowers

1st February - Mrs A Knox

8th/15th February - Mrs L Pollock

22nd Lent

200 Club Winners in December were: 56 Tom O'Malley £50: 72 Steve Wilson £25: 10 Norma Chadwick £10.

Social Evenings: The Village Hall Committee was delighted to see so many people at the Christmas Party. The February social will be a Fish and Chip Supper with Quiz on Friday the 27th. Please remember that you must place the order for your supper by 7.30 pm. A Bangers and Mash Supper is planned for March. Hope to see you at these events which are always a lot of fun.

Mobile Library Service: The Mobile Library will be in Church Lane on Monday 23rd February 2015 between 11.15 and 11.45 am.

Parish Council: The next meeting of the Parish Council will be held in the Village Hall on Tuesday 10th March 2015 at 7.30 pm. Please remember that all residents are welcome at Parish Council meetings.

A LENT COURSE FOR THE UFFINGTON GROUP

Please join us in this ‘Year of Discipleship’ to explore what it means to be a disciple of Christ in the modern world. The course will consist of five sessions at weekly intervals every Friday afternoon. The first one is on Friday 27th February, 2pm for a 2.15pm start, finishing promptly at 3.15pm, and the last session will be on Friday 27th March. The course will be held at Yew Cottage, Main Road, Uffington by kind invitation of Les Baillie. The sessions will be very informal and all are welcome. You don't need to be a churchgoer! It is hoped to offer the same course on five evenings in Lent to take place in Greatford. If you would like to know more about either of these courses, please contact Geoff or Donna Radley on 01778 561950.

TRUESDALE WARD

Dear Resident

Kelham & I attended the second feasibility study by Network Rail at Tallington which gave their preferred routes after the closure of level crossings and footpaths in the area.

District is again holding an Enterprise Week on 9th – 13th March 2015 at Stamford and Grantham. There will be interactive workshops and talks to help promote and stimulate old and new businesses in the area.

We have had a number of Parish Councils complain about the poor delivery of the SK Today magazine which should have arrived with you by the end of November. We understand that there have been problems with the company who had been contracted to print and deliver the magazine to the Post Office. If you would like a copy please either go onto the SKDC Website or contact Geoff O'Neill 01476 406080.

SKDC is starting to look at a new local plan which sets out the Council's planning policy for the district for a period of about 15-20 years. This will eventually incorporate the Core Strategy, Site Allocation & Policies Development Plan Document and any remaining policies from the 1995 Local Plan. Parish Councils will be consulted as part of the process.

It is hoped that in the next couple of months the District will have a new website which will be more user friendly.

If you have any problems relating to the District Council, please do not hesitate to contact either Rosemary Woolley 01778 560634 or Kelham Cooke 07940 187 426.

BRACEBOROUGH & WILSTHORPE PARISH COUNCIL

There was no Parish Council meeting in January but the Council has taken delivery of Passive Speed signs which you may have seen around Braceborough & Wilsthorpe. The Council has been fortunate that they had 6 given free of charge by the Police & Crime Commissioner for Lincolnshire.

The next Parish Council meeting will take place on Monday 2nd February 2015 at 7.30pm at Braceborough & Wilsthorpe Village Hall. All Welcome.

For more information on the Parish Council please go to
<http://parishes.lincolnshire.gov.uk/BraceboroughandWilsthorpe>

Rosemary Woolley, Clerk to the Council

UFFINGTON PARISH COUNCIL

Report from Parish Council Meeting held on Wednesday, 14th January, 2015.

Tallington By Pass – Network Rail had supplied a proposed route for this by pass at the Tallington Parish Council meeting on 13/1/15 but there will be another open meeting on Wednesday, 21 January 4-8pm and another one on 31st January 11am–2pm.

Speed signs - The passive signs have now been put up, the reactive sign should be delivered shortly.

Cllr. Thurston of the Play Area Committee reported that the Play Area had been granted £8500. From LCC & SKDC Towards it construction.

Some of the grips have been cleaned out to reduce the flooding on Newstead Corner.

Cllr. Genever complained about the total man days it took to repair the footpath outside his farm entrance. C. Cllr. Trollope-Bellew stated that he would take this up at county level as LCC are always complaining about lack of money so to waste it like this is unacceptable.

Mr. R. Irvine reported that Tallington and other villages north of Peterborough have reached their target number of subscriptions for Ultrafast Broadband from Gigaclear this will be installed in 2015. If sufficient people are interested it is likely the scheme could be extended to the whole of Uffington. Further details can be obtained from <http://ultrafastpeterboroughvale.info/> Anyone interested can register on line at <http://gigaclear.force.com/community/ServiceEnquiry>

Planning permission has been received for

Reduction of height of Lime trees – The Old Rectory – Mr. Yates

Reduction of stem of lime tree – Uffington Church - Mr. Yates

Alteration and conversion of garage – The Wash House, Casewick – V. Thompson

Extension and internal alterations – 45 Main Road – P. Mulvaney

The following two applications were discussed at the meeting:

1st Floor and single storey extension, internal and external alterations to property – The Lodge Casewick - J. Allport.

Change of use of domestic garage loft to home office – 1 Manner Close – T. Brown.

Cophill School had volunteered to grit the Barnack Road during the icy weather for which we are grateful. Anyone using this road in icy condition can use this salt, so feel free, do your bit for other road users, the grip bin for this is just north of the river bridge.

Cllr. Brown asked for the hedge to be trimmed between the footpath and Manner Close, the Chairman stated that he would trim this when the verge is dry. He also asked regarding fitting broadband in the Village Hall which may increase lettings. Mr. Irvine stated that he would go to the next Village Hall meeting to see what the feeling was regarding this.

Dist Cllr. Woolley reported the following: The installation of raised decking and log cabin will be going to Committee at SKDC on 3rd February. The poor delivery of SK Today is due to the company who print and deliver this magazine to the Post Office. If anyone would like a copy go to the SKDC website and download one or contact Geoff O'Neill 01476 406080. SKDC is starting to look at a new local plan which sets out the Council's planning policy for the district for about 15 years. Dist. Cllr. Woolley made representation that Parish Councils should have a greater involvement in the plan preparations as in 2006.

Is computing driving you

mad?!?

You can have PC, Tablet, Internet,
Email and Network problems
solved in your own home on a
no fix, no fee basis.

No callout charge!!

You can also have training on your own
equipment when it suits you.

PC Health Check - £50
(At least 2 hours)

To see how I can help please call

01780 754802

Robert Irvine

BSc(Hons), MSc, MBCS, CEng, CITP

Barry R Price

Interior Decorator

For All Your Decorating Needs

Professional – Reliable – Local

Tel: 01780 767435

SPACE FOR YOUR MESSAGE
OR ADVERT

The Oil Tank Company

We install the latest, efficient and
environmentally safe **PLASTIC Tanks** for
Domestic, Industrial and Commercial use.

New Tanks Installed.

Old Tanks Removed.

Oil Transferred.

Emergency pump out service.

Single and Double skinned tanks available

Free site visits and estimates.

the

Oil Tank Company Ltd

Tel (01780) 782255



Copthill School

Independent Nursery and Day School

FOR CHILDREN AGE 2 TO 11 YEARS

At Copthill we have a clear sense of what makes us
special - our pupils' impressive achievements in the academic,
sporting and creative arenas speak for themselves.

Contact us to arrange a personal visit:
01780 757506 mail@copthill.com

COPHILL SCHOOL, BARNACK ROAD, UFFINGTON, STAMFORD,
LINCOLNSHIRE, PE9 3AD

www.copthill.com

Michael Oldfield Bsc (Hons) Ost.

Deeping Osteopaths

Tel: 01778 380963

www.deepingosteopaths.co.uk

YOUNG or OLD
the Osteopath clinic will offer you:

A patient centred evaluation
A tailor made treatment plan
Maintenance, Advice, Care, Support and Safety

muscle tension arthritic pain back pain headaches slipped disc
sciatica trapped nerves sports injuries repetitive strains tennis elbow
frozen shoulder upper limb pain lower limb pain and many more...

The Deepings Community Centre
2 Douglas Road, Market Deeping
PE6 8PA



The printing and binding of
FAMILY HISTORY BOOKS
a speciality

to include family photographs
and memorabilia

Short runs – 1 book & upwards
(from manuscript or disc supplied)

PETER SPIEGL & CO
Guash Way
Ryhall Rd Industrial Estate
Stamford

Tel: 01780 762550

BRACEBOROUGH

Holy Communion – Sunday 1st February at 9am, St Margaret’s Church. Everyone welcome. Please come along.

Annual PCC Meeting – Tuesday 24th February – 6pm in Village Hall. The annual meeting will be held to elect officers, review the past year’s accounts and reports together with any other relevant business.

Christmas Cards. The collection for Cancer Research, in lieu of village Christmas Cards, raised the magnificent total of £231. The Charity was delighted to receive such a significant sum. It is planned to repeat the idea next Christmas, but possibly for a local charity such as a hospice or Air Ambulance. Many thanks to all those who contributed so generously.

Carol Service. Thank you to all those who supported us on Christmas Eve at the annual carol service. Our thanks go to all those involved in decorating the church, contributing to the service and organising refreshments afterwards in the village hall – and to the 100+ congregation! Each year changes are made to the service content, of which, some find more favour than others. Following recent feedback from a number of people, in 2015 we plan returning to a previous format which concentrates on popular carols, a blend of traditional and modern readings and, hopefully, musical contributions from youngsters. If you have other ideas or requests, please contact Malcolm to discuss.

Dates for the Diary

Saturday 22nd February – The Shannon Reilly Trio – in concert at the Village Hall.

Enjoy an intimate evening of popular jazz with a dazzling selection of songs from the 1930s to the present day. Shannon Reilly is a vocalist of exceptional quality and her spellbound performances have captivated audiences across the UK. Pat McCarthy on guitar has performed with countless British jazz artistes & Warren Jolly on double bass has been in constant demand as a session player and side man with some of the best known names in jazz and pop. Tickets: Adults £10, Children £5, Family (2+2) £25. Doors open 7.30pm for 8pm start.

St Margaret’s & St Faith’s will be jointly welcoming U3A who are visiting the village on 2 more occasions in the New Year –5th March & 12th March. On each occasion we shall provide a tea and a talk on various aspects of historical and general interest. Some help with baking a cake and with serving the teas would be very welcome. Please contact Lyn or Malcolm on 561153 if you can help out.

Sunday 12th April Sunday Lunch in Village Hall. Traditional homemade roast lunch and dessert. 12.30pm for 1pm. Adults £8, Children £4. Licensed Bar, Raffle. In aid of church funds.

Fly The Flag. It costs just £5 to fly the flag to celebrate a birthday, anniversary or any other memorable or special event. Please contact James or Hazel.

READINGS FOR FEBRUARY

Usually, the readings for communion services are the NT and Gospel, and for Morning or Evening Prayer the Psalm, OT and NT – but at Candlemas, all services should use the reading from Luke.

	Psalm	OT	NT	Gospel
1st February Candlemas	24	Malachi 3:1-5	Hebrews 2:14-18	Luke 2:22-40
8th February 2 before Lent	104:26-end	Proverbs 8:1 + 22-31	Colossians 1:15-20	John 1:1-14
15th February Next before Lent	50:1-6	2 Kings 2:1-12	2 Corinth. 4:3-6	Mark 9:2-9
22nd February Lent 1	25:1-9	Genesis 9:8-17	1 Peter 3:18-22	Mark 1:9-15
1st March Lent 2	22:23-31	Genesis 17:1-7, 15-16	Romans 4:13-25	Mark 8:31-38

Colours in church: white/gold for Candlemas, then green until Ash Wednesday (18th), with purple (or blue) for Lent.

COMMUNITY CHOIR

Dear residents of the villages

I would like to say a big “Thank you” to all of you who attended the first Community Choir practice on Thursday 15th January. If you did not, then it is not too late to register your interest, or to just turn up at Cophill School to give us a try. We are practising every Thursday morning between 8.15 and 9.30 , or any part of that time that you can manage for a Community project with Cophill Upper School entitled “A Spotlight on Cophill” to be performed on Thursday 26th March. This is a story of the musicals seen through the eyes of a theatre spotlight and has been written and devised by Lucy-Rose Graham. It will follow the story of “This little light of mine” through the decades of theatre as we sing “It don’t mean a thing”, “Zipadee-doo-dah”, “Singin’ in the Rain”, “Chim chim cher-ee” to name but a few, and finally shine in the 70’s Grease toe tapper of “We go together”. All of the tracks will be available on CD if you cannot attend all rehearsals and we will provide a booklet of music/words priced at £3 to cover administration costs. You do not have to have read music before and it doesn’t matter if you have never sung since school...it is all about having fun with other people to smile our way through the gloomy first months of the year! For further details or to register your membership in the Community Choir, please contact Judith Graham for further details on 01780 757103 or by email jcg.pmg@btinternet.com

Top Cat Electrical

HELPING TO PROTECT YOUR PROPERTY

16 Baston Road, Greatford, Stamford, PE9 4PU

Tel: **01778 561946** Mob: **07742 963925**

Email: top_catl@live.co.uk

Web: topcatelectrical.co.uk

Serving the local community for the past 7 years.
From extra sockets, security lighting, Inspection & Testing to full re-wires.
P.A.T testing with the option of a FEMALE tester.
Links with local Builders, Plumbers and Solar Installers.
We are fully accredited with Napit, for all works including:
Domestic, Commercial, Industrial and Agricultural.

PLUMBER2PLUMBER

Tony Dunk

For all your plumbing needs

Gas Safe & OFTEC Qualified & Registered
Gas & Oil Fired appliance servicing



Tel: 01780 751116

Mob: 07754 161342



C6376

COOMBE FARM BOARDING KENNELS

Wilsthorpe near Greatford
Established family business for over 40 years

Open all year.

Dogs walked twice daily.

Large, insulated, heated kennels.

Fully licensed. Inspection welcomed.

For Details please telephone

Lawrence Kripe on 01778 560574

www.coombefarmkennels.co.uk

Mums Garden Maintenance

Based in Ashton
Effective and trustworthy
General Maintenance
Garden Clearance

Call Alwyn on
01780 740770 or 07912 873173

Are you Fit 2 Go?

Do the rigours of daily life leave you feeling exhausted?

Would you benefit from having more energy
and improving your health/ fitness levels?

Fit2Go Personal Training offers tailor made fitness
programmes guaranteed to make you feel fitter,
healthier and re-energised.

Contact: **Linda Lawson 07985 284091;**

Email: Linda.lawson@fit2go.org.uk



David Palmer Tree Services

01778 348082

07930 718812

Services include:

- Tree removal ○
- Pruning ○○
- Dead wooding ○○○
- Crown raising ○○○
- Stump grinding ○○○
- Hedge cutting ○

For a free, no obligation quote, please call us or email on info@davidpalmer-treeservices.co.uk

£5 million Public liability, NPTC certified, all work carried out to BS3998

MATHS TUITION

Hazel Williams
experienced tutor for
KS3/GCSE/A level

01778 560417

Rachael Kempton Driver Training

Over 12 years' experience
Patient Grade 5 Instructor

Tel: **01780 740108**

Mob: **07748 613431**

www.rachaelkempton.co.uk

Special Offer – First 3 Lessons £30



01572 823718
GreenThumb
LAWN TREATMENT SERVICE
**The UK's No.1
Lawn Care Company**

FROM AS
LITTLE AS
£15.00
PER TREATMENT
inc. VAT

- Feed & Weed Treatments
- Hollow-tine Aeration
- Scarification
- Pest & Disease Control
- Water Conservator

For your **FREE** lawn
analysis and quote
call **GreenThumb**
Bourne today.

FREE QUOTES

ROB'S GARDENING SERVICES

All Gardening Work Undertaken
(including pressure washing)

Contact Rob on

01778 341042 or 07920512802 or 07877 583484

KIRSTY & ROB'S PLANTS

Nurseery Address: 1 West End Road, Maxey, PE6 9EJ
Telephone: 07920512802

Opening Hours: SATURDAY & SUNDAY 10am-5pm; MONDAY 10am-6pm

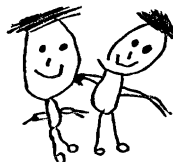
Large & varied selection of Trees, Shrubs, Perennials,
Standard Plants, Bedding & Hanging Baskets
New stock delivered weekly

Special Offer: Bring this advert with you to receive 10% discount on any purchase (limited time only)

MANOR FARM PRE-SCHOOL

In Barholm

Offers children a happy, caring and stimulating learning environment, in a lovely rural setting.
Housed in converted barns on a working farm, with a Large walled garden for lots of fun.
For children aged from 2yrs.
See our 'OUTSTANDING' Ofsted Report! (Feb 2011)
Do come and visit us!



An Ofsted Awarded
'Outstanding Pre-School'

www.manorfarmpreschool.co.uk

Mrs A Flint Ad. Dip Ed
Tel: 01778 560887

PAINTER & DECORATOR

Local Resident with References Available
FREE Quotes

JASON KENDALL
01778 426 409

LOVELLS LAKES

A1157 MAIN ROAD between West Deeping and Tallington
Two well stocked coarse fishing lakes
Carp, Roach, Tench, Bream, Rudd, Chub, Crucians.

£7 per day, £5 concessions
Parking behind most pegs
Open all year

Want to hold a fishing match here?
Just give us a call.
Call Andy on 07801090458

GLYNN WOOLF

SPECIALIST IN JOINERY

Over 40 years experience in all aspects of
carpentry and joinery.

Made to measure Kitchens, Bedroom furniture,
Library shelving. Bespoke cupboards/cabinets
Office furniture

Main Road, Uffington, Stamford, Lincolnshire

Tel: 01780 480750 Mob: 07960 493426

Appleyard
Building Contractors Ltd.

4 Marigold Close, Stamford PE9 2WJ.



Local Building Firm with over 25 years of
experience

*Brickwork *Stonework *Extensions
*Alterations *Renovations *Kitchens
*Bathrooms

*Replacement Doors & Windows
*Property Maintenance

For a free quote from a friendly, reliable
builder that you can trust,

call Darren on:

Mobile 07763761682 or 01780 753425

Or email appleyardbc@btinternet.com

RICHARD FEATHERSTONE COMPLETE AUTO CARE

MOT – SERVICING - REPAIRS

- Collection and delivery from Home or Work
- Competitive rates
- Friendly service
- No job too small

Telephone Richard on: 01780 740771 or 07816 588845

17 West Rd, Tallington, Nr Stamford, PE9 4RS

Construction Design & Maintenance

Services provided:-

Design to completion landscaping;
Patios; Ponds; Driveways; Decks; Turfing; Fencing;
Tree work; Hedge cutting; Digger for hire inc driver.
Plus garden maintenance.

Contact Pete Elmore on
07783 484373 or 07565 511924



Competitive Rates
Personal Service
Fully Insured

UFFINGTON

Church Flowers

1st Feb – Jane Naylor
8th/15th Feb – Jane Heap
22nd Feb/1st March - FREE

Flying the Flag. Either the Union Jack or St George's Flag has been flown as follows:

Date	Event	Sponsor(s)
11 th Jan	Ollie Stenson becoming a teenager	Paula Stenson
30 th Jan	Anniversary of AVM Johnnie Johnson's death	John Edwards

Mark your special date by sponsoring either the Union Jack or St George's flag, and make a £5 donation to Church funds. Contact David & Gail Genever or Graham Creedy (481084)

The 'Over 60's' would like to thank Copthill School for an excellent Christmas Lunch and entertainment, it was very much appreciated by all. Also a big thank you to Mrs Johnston for organising us all! The Casewick Cafe is open on Friday mornings from 8.30 -10am and continues at the Homestead until 12noon.

Snowdrop Sunday. Snowdrop Sunday 1st Feb, 2-4pm. Admire the snowdrops, then come and have a hot drink and some cakes in the church - free.

TALK AT UFFINGTON VILLAGE HALL

Graham Creedy talks about his years on the Royal Yacht



Saturday 7th February 2015 at 2.30pm

£10 on door in aid of village hall roof

Admission includes tea, delicious cakes and excellent company. Raffle.

KINDLY ORGANISED BY MICHAEL CROWE 01780 762490. ALL WELCOME

GREATFORD

Church Flowers: Marian Brebner

Church Cleaning: Scilla Campbell and Joan Aylett

Church Services: The services, which everyone is most welcome to attend, are:

8th February: Holy Communion at 9am;

22nd February: Family Service at 9am.

The organ needs playing regularly – if anyone would like to practise please contact the churchwardens.

A child's blue knitted hat with pig tails was found after the Christmas Eve service – enquiries to Lois Webb at Old Bridge Cottage (tel 560437).

Church Cleaning: If you can spare a few hours in 2015 to help with the cleaning please contact Cazz Anders (561032).

Carlby & District WI: This WI has members attending from Carlby, Bourne, Thurlby, Wilsthorpe, Braceborough and Greatford.

There was no meeting in January. The next meeting will be in Carlby Village Hall at 7.30 pm on Tuesday 10th February 2015 and will be a talk entitled 'Birds in Myth & Folklore' with Dr Chris Andrews. Members and visitors are always welcome. For further information please phone 01778 590180.

Bell ringing: Greatford practice night – Wednesday 18th February at 7:30pm.

Greatford Parish Council: The Parish Council needs a new Clerk with immediate effect. If you are interested and require further details please contact the Chairman George Aylett on 560005.

Mobile Library: The van will call at Greatford opposite the phone box on **Mondays** 23rd February and 23rd March from 12:00 noon to 12:30 pm.

Flying the Flag: You can help to raise funds by having the Union Jack or the Flag of St George flown in honour of any special event. The Flags can be flown at the Village Hall in aid of Village Hall Funds or on the flagpole outside the Church in aid of Church Funds. Please contact Cyril Webb on 560437 in either case.

Dog Fouling: We still need to be vigilant.

Towers & Spires: Our thanks go to Pete Hickman and Gail Genever for overcoming serious computer failure last month to reconstruct the material for January's edition and still meet the tight deadline of the printer's Christmas schedule.

Greatford Level Crossing. Are you aware that Network Rail are proposing to close the Greatford Level Crossing permanently along with that at Maxey, Lolham and Woodcroft and making various suggestions on other crossings. This could affect your future journeys if roads are closed. Have your say with regards to these proposals. Detailed information can be found on Network Rail's Website - www.networkrail.co.uk/ECMLlevelcrossings and their email is – ECMLlevelcrossings@networkrail.co.uk. If you wish to make comments, objections, or representations you must do so before 2nd March 2015.

WHISTLE STOP PUB

TALLINGTON

01780 740557

A friendly village pub that offers a warm welcome.
If you are looking for reasonably priced, quality cooked
traditional pub food, then look no further.
Dogs on leads are welcome.

Daily Meal Deals

Monday – Home Made Pie - £9.95 - topped with a puff pastry lid, served with garden peas and either chips or creamy mash and a drink (Choice of, Lamb & Mint, Steak & Ale or Chicken, leek & Hock)

Tuesday – BBQ Rib Combo - £13.95- whole rack of BBQ ribs, chicken wings, chips, salad, coleslaw, onion rings, garlic bread, chicken goujons & king prawns

Wednesday – 8oz Sirloin Steak - £9.95 - served with chips, onion rings Peas or Salad - (Add Sauce, Brandy & Peppercorn or Stilton - £1.00)

Thursday – Any pub Classic Meal or Mega Burger - £5.95

Friday – Beer battered Cod, with chips, mushy or garden peas, curry sauce, pickled onion, gherkin, bread & butter - £6.95

Saturday – Surf & Turf - £13.95 - 8oz Sirloin Steak with king prawns in creamy garlic sauce or with king prawns in tempura batter served with chips, salad or peas

Warm up with our selection of hot drinks and a tea cake for only - £1.50

Happy hour 3-6, drinks from - £2.60

Pool & Darts Area

(BT Sport, ATR, & Racing UK)

Fun Cribbage – Tuesdays 7.30 pm

Fun Dominos - Thursday 7.30pm

Quiz night 8pm

2nd Thursday of the month

£1.00 entry includes warm snacks in the interval

Karaoke

last Friday of the month starts at 8pm till late

visit our website: www.whistlestop.co.uk

SPACE FOR YOUR MESSAGE OR
ADVERT

ALL ASPECTS OF CARPENTRY
LOFT & GARAGE CONVERSIONS
RENOVATIONS & ALTERATIONS
KITCHEN FITTING
FLOORING



07928075559/01778 701489
james_negus@hotmail.com

City &
Guilds
Qualified

You have a lovely, stylish home
& a hectic, busy lifestyle - don't
you deserve the luxury of a
domestic cleaner?

- ✓ No long term contracts
- ✓ The same cleaner each visit for consistency
- ✓ Confidential & discrete
- ✓ A quality cleaning service for your home

Weekly • Fortnightly • One-Offs

We'd love to deal with your home cleaning.
To discover more call us today on

01733 590352 or 0793 8979691

www.cleanerstogo.co.uk

spires@cleanerstogo.co.uk

You can trust us to do
a good job for you



GUITAR LESSONS

Lessons for beginners of all
ages by Grade 8 qualified
guitarist.

I have just completed a
music degree and offer
acoustic or electric guitar
lessons for Grading or
simply playing your
favourite songs!

Ring Tom on [07772] 177171

Love Travel?



**Have You Heard About
Our Membership Based
TRAVEL CLUB?**

Benefit From Price Guarantees
Award Winning Booking Engine
Luxury Holiday Experiences
Global Sporting Events
And More

And as it's a Club Membership
Always Means You Only Pay
Wholesale, Never Retail.

For Details phone:
07940 872026



GreenWays

Garden Maintenance and Care.
Planning, Planting and Pruning
Wildlife Gardening.
Fences, Sheds etc

Tim - 01780 481550 or 07981 547254
Donna - 01778 561950 or 07980 506381

The Perfect Alternative
To Kennels!
Let your dog stay with a local
vetted loving host family,



because at Barking Mad we believe your dog
deserves a holiday too!
For more info contact Kerry Wells –
01775 720382 or
email kerry.wells@barkingmad.uk.com
www.barkingmad.uk.com

Neil Parmenter Contractors

All aspects of building
from extensions to driveways

Drainage

Patios

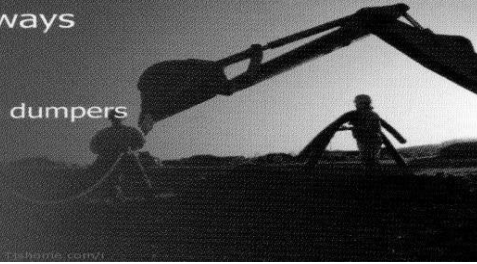
Machinery Hire from diggers to dumpers

Skid steer loaders and more
7.5 tonne lorry for muck away

Tel: 01778343406

Mob: 07718665206

E: neil@neilparmenter.com



PAINTER & DECORATOR

Interior - Exterior - Paperhanging
House shoes worn & clean dustsheets used.
Fully insured friendly service, 5 star ratings.

Also WOOD CONSERVATION & REPAIRS

Contact Richard on

01778 421878, 07759 250424

Or email: rrbrundell@yahoo.co.uk

CHILD CARE

Retired NNEB qualified nanny
available for childcare.

Evenings or day time

on a regular or occasional basis.

Over forty years' experience.

CV & References available on request.

Call Suzanne on

01780 749306

VILLAGE WINDOW CLEANING

Windows, Frames &
Surrounds Cleaned
Soffits & Fascias

Regular Reliable Service
Purified Water Pole System
(No Ladders – No Damage)

For a cleaner clean

Call STEVE on

01733 327 265 07789 056 256

EVERY WINDOW WITHIN REACH



Bed & Breakfast Accommodation

30 Casewick Lane
Uffington
Stamford
Lincs
PE9 4SX

Mrs D Jarvis

Luxury 4 Star
hospitality



Phone: 01780 757392
Mobile: 07767125236
Denisea30@talktalk.net

CLEANSTART

Affordable – Efficient - Reliable

- Domestic cleaning
- Weekly or fortnightly
- One off sparkle cleans
- Professional carpet cleaning
- Professional steam cleaning
- Based in Stamford
- References available



Call 01780 767289 or 07947552867

AEROBICS Thursday 7.30 - 8.30pm Friday 9.30 - 10.30am	TOTAL BODY CONDITIONING Monday 9.30 - 10.30am Monday 6.20 - 7.20pm
30 minute cardio workout to burn calories, followed by a toning session.	Exactly what it says! Perfect for all over toning.



FITNESS CLASSES

WITH SALLY WORMALL
@ DEEPINGS DANCE &
FITNESS CENTRE
01778 347168

FITNESS PILATES & YOGA
Monday 7.30 – 8.30 pm
Thursday 9.30 - 10.30am
Thursday 6.20 – 7.20pm

A blend of exercises to improve posture, balance, core strength & flexibility.

FITNESS PILATES
Monday 10.40 – 11.40am
(phone to book)

ALSO SUPER SENIORS class
at the Deepings Community
Centre - Thursday 11am

All classes £4.50 pay as you go except evening Fitness Pilates & Yoga classes which are 6 week courses – phone to book courses.



Like the Sally Wormall Fitness classes facebook page
Visit www.deepingsdanceandfitnesscentre.co.uk



Email: bookingsbph@yahoo.co.uk

www.bastonph.co.uk

- Large Estate vehicle in
- Full Black Leather interior & German reliability
- Airconditioned
- Licensed by SKDC to carry up to 4 passengers
- Validated customer testimonials

Airport Transfers—Seaport Transfers
Long Distance Travel—Executive Travel

Baston Private Hire

Your local personal private hire company

Tel: 077532 98900

EATING TOO MUCH FOOD? DRINKING TOO MUCH ALCOHOL?

Bad habits can be changed with Hypnotherapy
Enabling you to lead a healthier life

ALCOHOL CONTROL + WEIGHT CONTROL

Hypno-Band
Weight Loss System*

Licensed Practitioner for Hypno-Band Gastric Band Hypnotherapy

Alexander Jamieson
D.Hyp, PDCHyp, PDCBHyp, MBSCH

Tel: 01778 560630

alex@lincolnshire-rutland-hypnotherapy.co.uk

**CHURCH SERVICES AND DIARY DATES
FOR FEBRUARY 2015 VOLUME 29 NUMBER 11**

Sunday	Monday	Tuesday
1st Feb	2nd	3rd
Candlemass 9am Braceborough HC 10.30am Wiltthorpe HC 10.30am Uffington HC 10.15am WDeeping MP 1.45pm WDVH Walkers 2-4pm Uffington Snowdrop Sunday 6pm Barholm ES	1.45pm TallVH Whist	
8th	9th	10th
2nd before Lent 9am Greatford HC 10.15am WDeeping HC 10.30am Uffington MP 6pm Tallington ES	1.45pm TallVH Whist	2.45pm WD Bible Study Cromwell House
15th	16th	17th
Next before Lent 9am Barholm HC 10.30am Uffington HC & Sunday Club 11.30am WDeeping All Age Worship 1.45pm WDVH Walkers	1.45pm TallVH Whist 2pm Welland MU	
22nd	23rd	24th
Lent 1 9am Greatford All Age Worship 10.15am WDeeping MP 10.30am Uffington All Age Worship 10.30am Tallington HC	1.45pm TallVH Whist	2.45pm WD Bible Study Cromwell House 7.30pm WDVH Heritage Group

Wednesday	Thursday	Friday	Saturday
4th	5th	6th	7th
2-4pm WDVH Bowls 2pm TallVH Bingo 7.30pm UffVH WI An Illustrated talk on the life of John Clare – Mr David Dykes Competition: A rural idyll – a photo or picture of your ideal rural landscape	8-10pm WDVH Bowls		2.30pm UffVH Royal Yacht Britannia Talk
11th	12th	13th	14th
2-4pm WDVH Bowls 2pm TallVH Welcome Club	8-10pm WDVH Bowls		
18th	19th	20th	21st
Ash Wednesday 2-4pm WDVH Bowls 2pm TallVH Welcome Club 7.30pm Uffington HC	8-10pm WDVH Bowls		10.30am WDVH St Andrew's Church Coffee Morning
25th	26th	27th	28th
2-4pm WDVH Bowls 2pm TallVH Welcome Club	8-10pm WDVH Bowls	7pm TallVH Social Evening 7.45pm WDVH Rambling Readers	7.30pm WDVH Lincs Rural Arts Production